



# Danville Area Community College

## Key Performance Indicators for Achieving the Dream



## **DACC Key Performance Indicators for Achieving the Dream – January 2021**

### KPI #1 – Course Success and Retention

- a. Developmental course success rates
- b. Gatekeeper course success rates
- c. Fall-to-Spring retention, full and part-time
- d. Fall-to-Fall retention, full and part-time
- e. Credit course success
- f. Success rate of developmental students in next level of course work

### KPI #2 – Persistence

- a. Developmental advancement
- b. Momentum points
- c. Persistence 24/12 credits

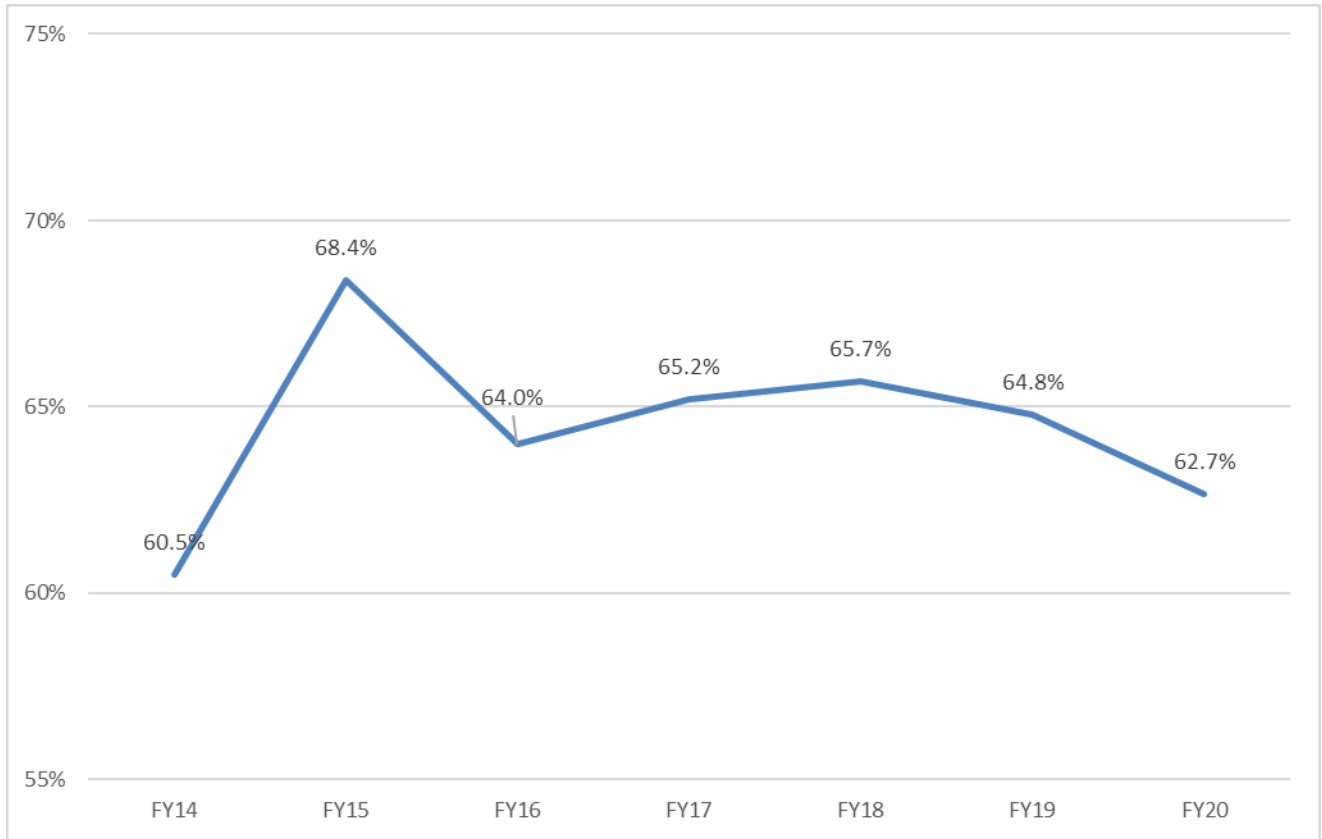
### KPI #3 – Completion

- a. DACC 2 and 3 year graduation rate, full-time students
- b. Degree and certificate increase
- c. Degree and certificate completions
- d. 150% graduation rate
- e. At-Risk completion
- f. 4 year graduation rate, fall and spring cohorts

### KPI #4 – Transfer

- a. Transfer to 4 year
- b. Transfer to a Community College

**KPI 1a: Developmental Course Success Rate, DEV\* Courses only**

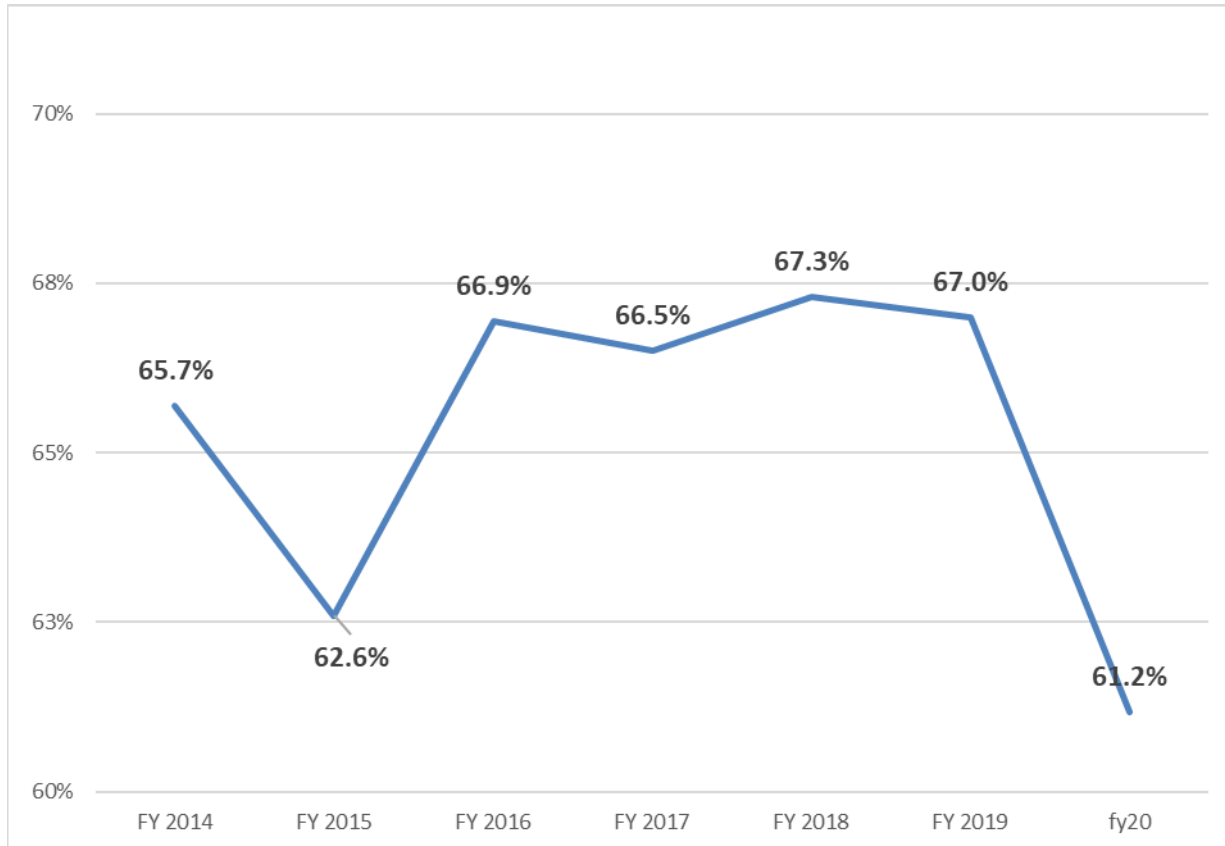


	FY 2014	FY 2015	FY 2016	FY 2017	FY 2018	FY 2019	FY 2020
All	283 of 468 60%	273 of 399 68%	263 of 411 64%	260 of 399 65%	270 of 411 66%	228 of 352 65%	198 of 316 63%
White	166 of 242 69%	155 of 201 77%	169 of 245 69%	142 of 207 69%	161 of 220 73%	131 of 177 74%	117 of 174 67%
Black	78 of 173 45%	70 of 119 59%	69 of 121 57%	68 of 124 55%	65 of 131 50%	64 of 117 55%	56 of 88 64%
Hispanic	8 of 12 67%	14 of 24 58%	8 of 17 47%	26 of 33 79%	12 of 16 75%	7 of 13 54%	10 of 16 63%
Other	31 of 41 76%	34 of 55 62%	17 of 28 61%	24 of 35 69%	32 of 44 73%	26 of 45 58%	15 of 38 39%
Male	98 of 176 56%	96 of 151 64%	89 of 145 61%	85 of 132 64%	91 of 134 68%	57 of 92 62%	72 of 127 57%
Female	185 of 292 63%	177 of 245 72%	174 of 266 65%	175 of 267 66%	179 of 277 65%	171 of 260 66%	126 of 189 67%
Pell	203 of 359 57%	194 of 297 65%	170 of 266 64%	155 of 244 64%	165 of 258 64%	149 of 229 65%	104 of 157 66%
Non-Pell	80 of 109 73%	79 of 103 77%	93 of 145 64%	105 of 155 68%	105 of 153 69%	79 of 123 64%	94 of 159 59%
DEVE 098	88 of 145 61%	89 of 122 73%	73 of 116 63%	66 of 89 74%	41 of 65 63%	36 of 53 68%	37 of 55 67%
DEVE 099	47 of 62 76%	53 of 62 85%	29 of 38 76%	5 of 8 63%			
DEVR 098	40 of 80 50%	41 of 72 57%	40 of 71 56%	43 of 80 54%	42 of 64 66%	23 of 62 37%	18 of 35 51%
DEVR 099	2 of 5 40%	5 of 8 63%	2 of 2 100%	1 of 3 33%	2 of 2 100%	1 of 3 33%	
DEVM 098	52 of 76 68%	30 of 46 65%	41 of 57 72%	48 of 64 75%	76 of 109 70%	54 of 81 67%	49 of 80 61%
DEVM 099	22 of 37 59%	8 of 16 50%	9 of 12 75%	10 of 14 71%	14 of 24 58%	23 of 30 77%	15 of 28 54%
DEVM 100	32 of 63 51%	47 of 74 64%	69 of 115 60%	87 of 141 62%	95 of 147 65%	91 of 123 74%	79 of 118 67%

Data Source: Institutional Effectiveness Office

**Methodology:** Included are all students enrolled in a DEVE, DEVM or DEVR course during the given fiscal year with success being defined as earning a C or better.

## KPI 1b: Gatekeeper Course Success Rate

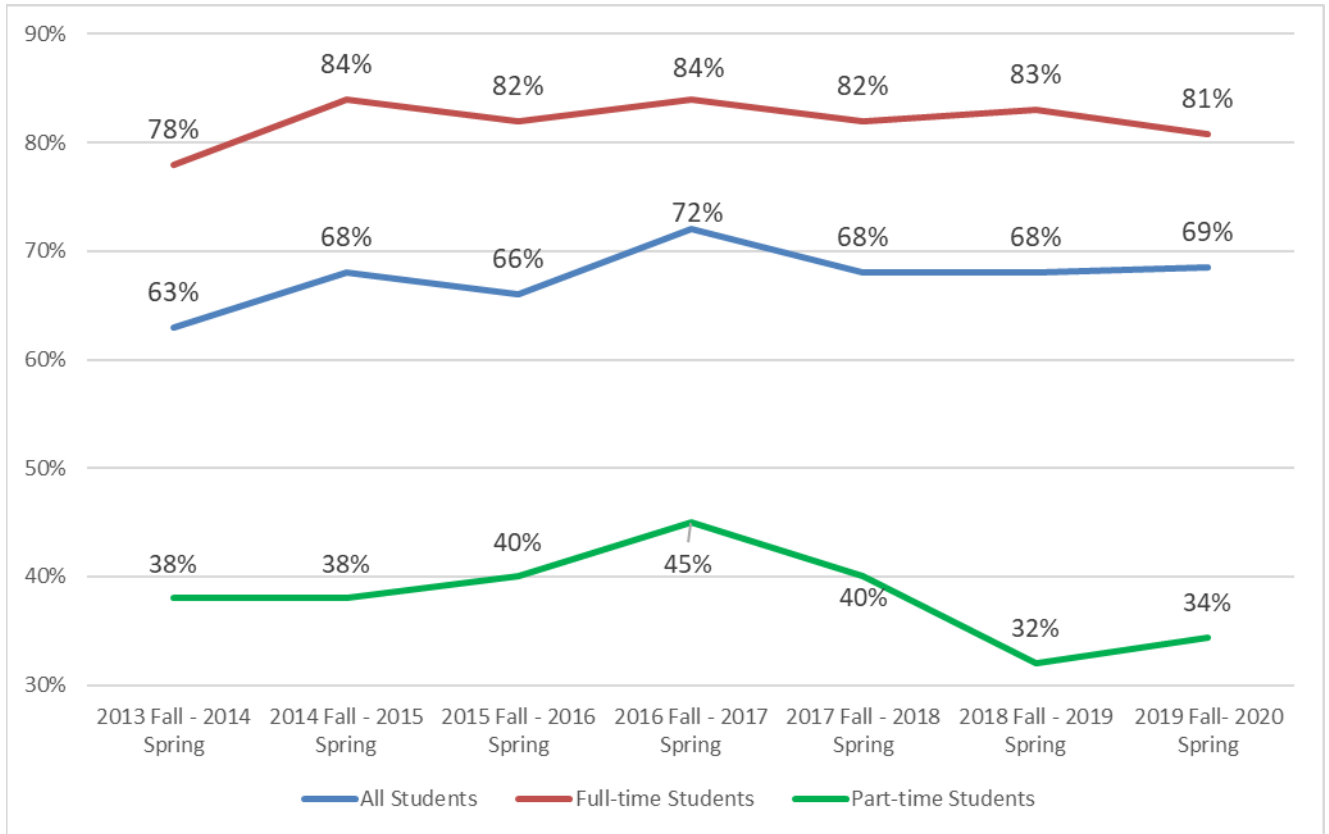


	FY 2014	FY 2015	FY 2016	FY 2017	FY 2018	FY 2019	FY 2020
All	1898 of 2889 66%	1670 of 2668 63%	1723 of 2574 67%	1705 of 2564 66%	1634 of 2428 67%	1676 of 2483 67%	1344 of 2197 61%
White	1450 of 2147 68%	1233 of 1916 64%	1253 of 1815 69%	1265 of 1839 69%	1184 of 1692 70%	1178 of 1666 71%	1006 of 1471 68%
Black	215 of 412 52%	198 of 400 50%	190 of 359 53%	198 of 355 56%	203 of 385 53%	211 of 387 55%	148 of 383 39%
Hispanic	69 of 101 68%	84 of 125 67%	66 of 102 65%	72 of 110 65%	73 of 120 61%	91 of 134 68%	57 of 100 57%
Female	1152 of 1777 65%	1041 of 1694 61%	1036 of 1612 64%	1049 of 1600 66%	1040 of 1550 67%	1008 of 1536 66%	894 of 1349 66%
Male	746 of 1112 67%	629 of 974 65%	687 of 962 71%	656 of 964 68%	594 of 878 68%	668 of 947 71%	450 of 848 53%
Pell	967 of 1666 58%	897 of 1566 57%	870 of 1430 61%	840 of 1392 60%	821 of 1352 61%	665 of 1159 57%	629 of 1042 60%
Non-Pell	931 of 1223 76%	773 of 1102 70%	853 of 1144 75%	865 of 1172 74%	813 of 1076 76%	1011 of 1324 76%	715 of 1155 62%
BIOL 102	153 of 248 62%	95 of 228 42%	107 of 203 53%	65 of 153 42%	61 of 120 51%	70 of 104 67%	50 of 69 72%
BIOL 136	154 of 312 49%	138 of 267 52%	123 of 250 49%	144 of 256 56%	133 of 222 60%	126 of 255 49%	140 of 230 61%
CBUS 150	151 of 205 74%	101 of 147 69%	119 of 164 73%	90 of 133 68%	89 of 120 74%	86 of 126 68%	78 of 101 77%
CECN 102	191 of 272 70%	112 of 193 58%	108 of 191 57%	101 of 183 55%	112 of 173 65%	107 of 184 58%	96 of 201 48%
ENGL 121	199 of 290 69%	133 of 211 63%	163 of 227 72%	171 of 238 72%	141 of 208 68%	95 of 149 64%	83 of 171 49%
ENGL 101	481 of 624 77%	434 of 567 77%	506 of 647 78%	530 of 663 80%	472 of 616 77%	522 of 678 77%	408 of 584 70%
MATH 107		69 of 131 53%	113 of 182 62%	227 of 360 63%	172 of 303 57%	198 of 310 64%	148 of 270 55%
MATH 108	246 of 480 51%	211 of 390 54%	104 of 194 54%	81 of 137 59%	66 of 137 48%	63 of 117 54%	48 of 99 48%
PSYC 100	323 of 458 71%	377 of 534 71%	380 of 516 74%	296 of 441 67%	388 of 529 73%	409 of 560 73%	293 of 472 62%

Data Source: Institutional Effectiveness Office

**Methodology:** Included are all students enrolled in a course defined as gatekeeper, which are listed in the chart, with success being defined as earning a C or better.

### KPI 1c: Fall to Spring Retention, Full and Part-time New Students

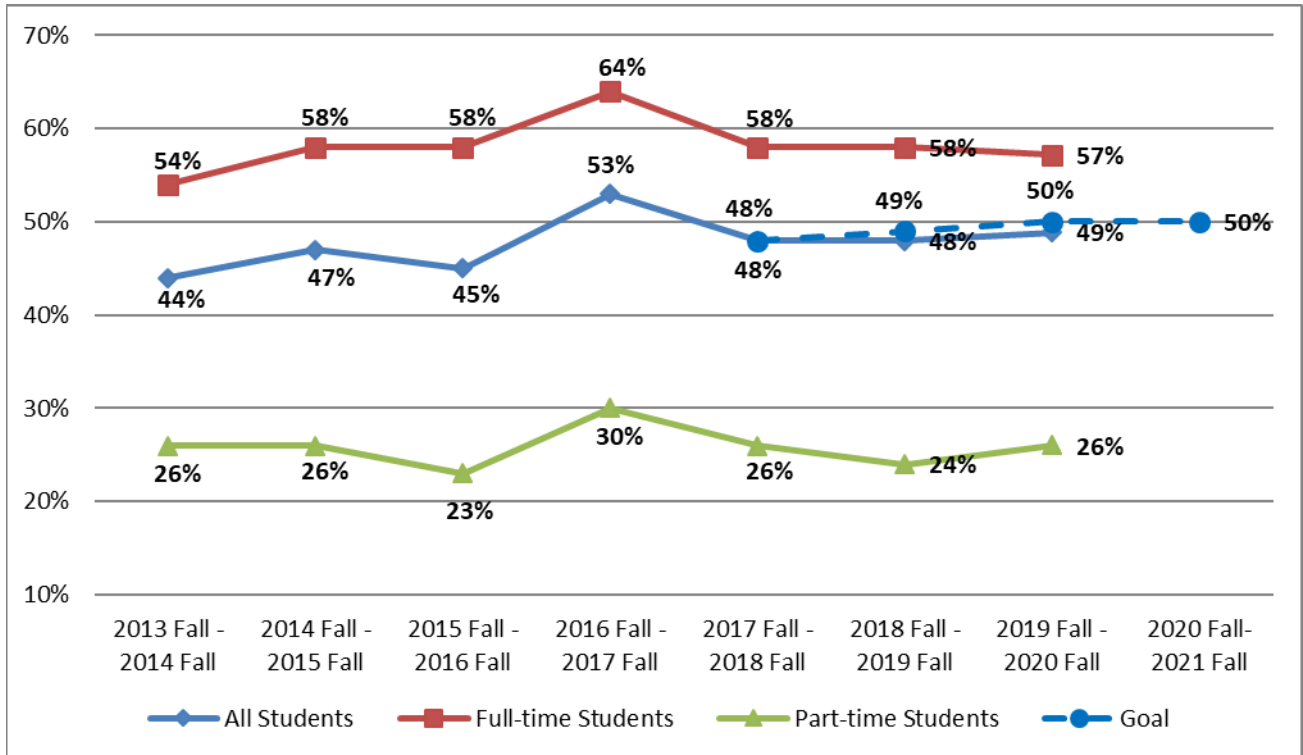


	2013 Fall Cohort	2014 Fall cohort	2015 Fall cohort	2016 Fall cohort	2017 Fall cohort	2018 Fall cohort	2019 Fall cohort
Cohort	373 of 592 63%	407 of 597 68%	369 of 557 66%	358 of 498 72%	322 of 472 68%	276 of 407 68%	248 of 362 69%
White	276 of 425 65%	321 of 440 73%	282 of 393 72%	277 of 370 75%	239 of 328 73%	207 of 282 73%	186 of 252 74%
Black	56 of 99 57%	42 of 82 51%	37 of 89 42%	38 of 63 60%	38 of 70 54%	29 of 60 48%	28 of 62 45%
Hispanic	15 of 27 56%	15 of 30 50%	10 of 19 53%	14 of 23 61%	14 of 21 67%	19 of 22 86%	14 of 17 82%
Other	26 of 41 63%	29 of 45 64%	40 of 56 71%	29 of 42 69%	31 of 53 58%	21 of 43 49%	20 of 31 65%
Male	178 of 279 64%	163 of 246 66%	163 of 264 62%	159 of 205 78%	154 of 220 70%	113 of 182 62%	106 of 154 69%
Female	195 of 313 62%	244 of 351 70%	206 of 293 70%	199 of 293 68%	168 of 252 67%	163 of 225 72%	142 of 208 68%
Pell	226 of 334 68%	233 of 327 71%	206 of 281 73%	186 of 244 76%	185 of 255 73%	144 of 187 77%	124 of 165 75%
Non-Pell	147 of 258 57%	174 of 270 64%	163 of 276 59%	172 of 254 68%	137 of 217 63%	132 of 220 60%	124 of 197 63%
Full-Time	291 of 375 78%	327 of 389 84%	284 of 346 82%	288 of 341 84%	261 of 320 82%	237 of 284 83%	215 of 266 81%
Part-Time	82 of 217 38%	80 of 208 38%	85 of 211 40%	70 of 157 45%	61 of 152 40%	39 of 123 32%	33 of 96 34%

Data Source: Institutional Effectiveness Office, using degree/certificate seeking students in the Fall cohort

**Methodology:** Included are fall cohort students, seeking degree or certificate, with success being defined as returning for the immediate spring semester

**KPI 1d: Fall to Fall Retention with goal, Full and Part-time New Students**

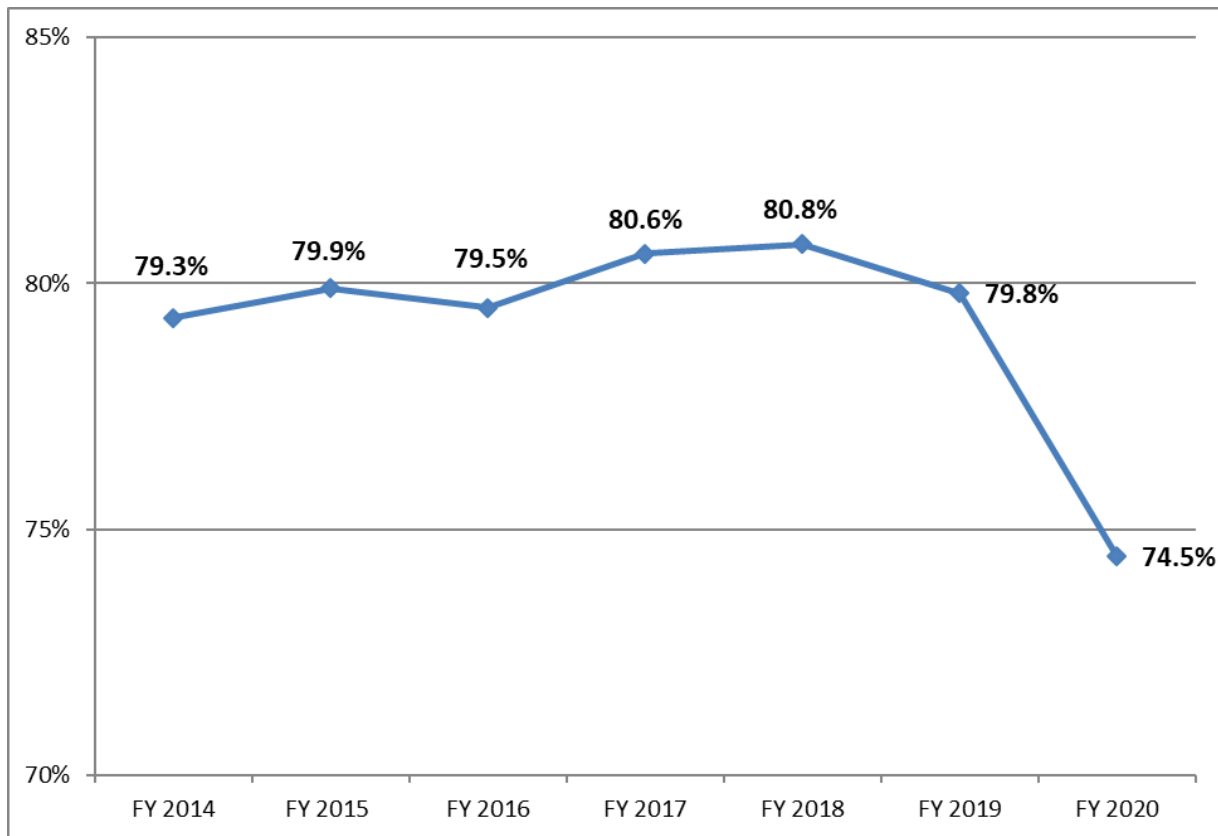


	2013 Fall cohort	2014 Fall cohort	2015 Fall cohort	2016 Fall cohort	2017 Fall cohort	2018 Fall cohort	2019 Fall cohort
Cohort	260 of 592 44%	282 of 597 47%	251 of 557 45%	265 of 498 53%	226 of 472 48%	194 of 407 48%	177 of 362 49%
White	191 of 425 45%	217 of 440 49%	189 of 393 48%	209 of 370 56%	167 of 328 51%	151 of 283 53%	132 of 252 52%
Black	36 of 99 36%	32 of 82 39%	26 of 89 29%	20 of 63 32%	24 of 70 34%	22 of 60 37%	19 of 62 31%
Hispanic	10 of 27 37%	10 of 30 33%	3 of 19 16%	12 of 23 52%	10 of 21 48%	10 of 21 48%	11 of 17 65%
Other	23 of 41 56%	23 of 45 51%	33 of 56 59%	24 of 42 57%	25 of 53 47%	11 of 32 34%	15 of 31 48%
Male	113 of 279 41%	109 of 246 44%	103 of 264 39%	117 of 205 57%	98 of 220 45%	79 of 182 43%	83 of 154 54%
Female	147 of 313 47%	173 of 351 49%	148 of 293 51%	148 of 293 51%	128 of 252 51%	115 of 225 51%	94 of 208 45%
Pell	157 of 334 47%	159 of 327 49%	137 of 281 49%	135 of 244 55%	124 of 255 49%	93 of 188 49%	91 of 165 55%
Non-Pell	103 of 258 40%	123 of 270 46%	114 of 276 41%	130 of 254 51%	102 of 217 47%	101 of 219 46%	86 of 197 44%
Full-Time	203 of 375 54%	227 of 389 58%	202 of 346 58%	218 of 341 64%	186 of 320 58%	165 of 284 58%	152 of 266 57%
Part-Time	57 of 217 26%	55 of 208 26%	49 of 211 23%	47 of 157 30%	40 of 152 26%	29 of 123 24%	25 of 96 26%

Data Source: Institutional Effectiveness Office, using degree/certificate seeking students in the Fall cohort

**Methodology:** Included are fall cohort students with success being defined as returning for the following fall semester.

### KPI 1e: Credit Course Success

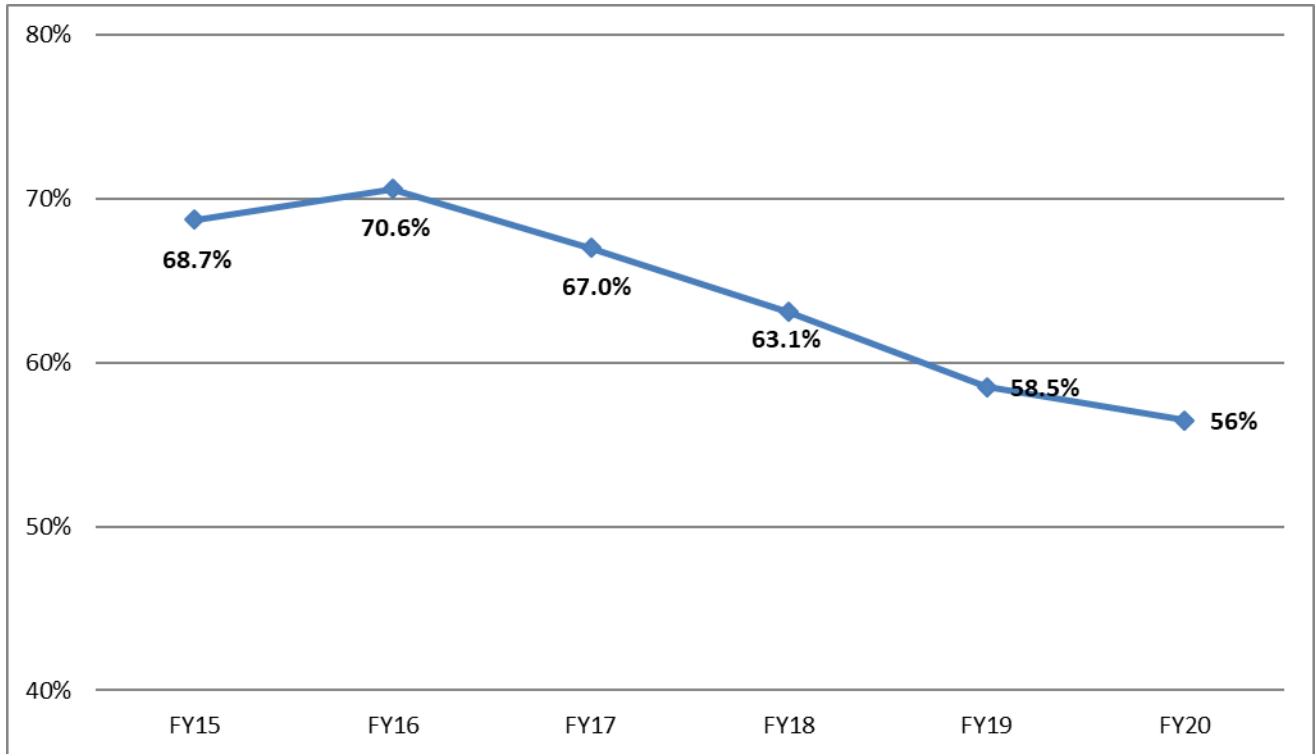


	FY 2014	FY 2015	FY 2016	FY 2017	FY 2018	FY 2019	FY 2020
All UG	79.3%	79.9%	79.5%	80.6%	80.8%	79.8%	74.5%
Male	79.7%	81.0%	80.7%	80.8%	80.8%	80.5%	71.0%
Female	79.0%	78.9%	78.5%	80.4%	80.8%	79.2%	77.6%
White	81.0%	81.0%	81.0%	82.6%	82.8%	82.3%	81.9%
Black	70.4%	73.7%	71.2%	68.0%	70.3%	70.6%	70.6%
Hispanic	80.9%	84.8%	80.1%	80.5%	78.6%	80.5%	73.1%
Pell Receiving	73.8%	74.7%	75.4%	76.7%	75.3%	73.9%	78.0%
No Pell	84.9%	84.9%	83.4%	84.3%	85.8%	84.2%	72.3%
1st Generation	79.1%	79.5%	78.7%	78.8%	78.8%	87.5%	70.8%
Not 1st Generation	79.8%	80.8%	81.1%	84.4%	84.8%	82.1%	78.4%
High School Section	92.2%	90.7%	89.5%	91.3%	90.8%	91.0%	86.5%
Correctional Section	89.7%	93.0%	91.2%	88.5%	83.4%	88.8%	69.5%
Web/Hybrid Section	71.7%	72.9%	72.8%	72.3%	74.1%	71.7%	76.6%
Regular F2F Section	78.2%	78.0%	78.8%	81.9%	82.1%	80.6%	79.9%

Data Source: Institutional Effectiveness Office

**Methodology:** Included are all students enrolled in an undergraduate credit course (not adult or corporate and community education) with success being defined as earning a C or better.

### KPI 1f: Success Rate of Developmental Students in Next Level of Course Work



#### TOTAL

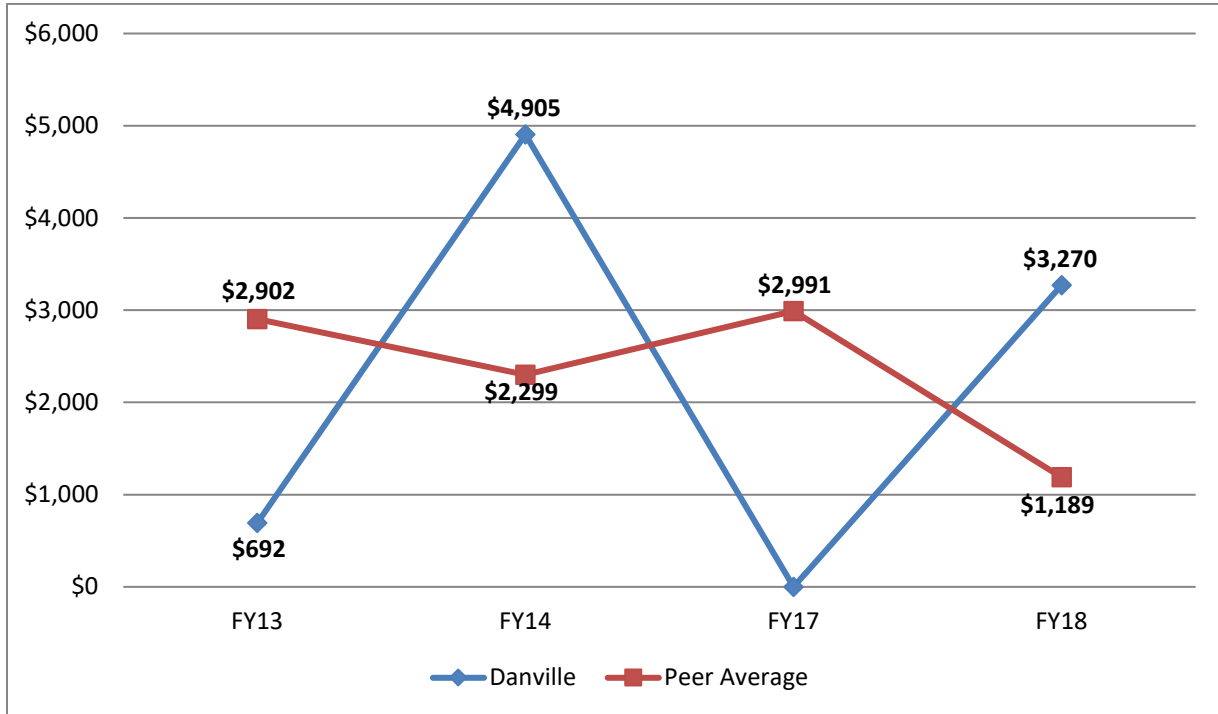
	FY 2015	FY 2016	FY 2017	FY 2018	FY 2019	FY 2020
All	228 / 332 = 69%	264 / 374 = 71%	301 / 449 = 67%	279 / 442 = 63%	210 / 359 = 58%	174 / 308 = 56%
Male	86 / 132 = 65%	111 / 150 = 74%	105 / 158 = 66%	72 / 124 = 58%	75 / 120 = 63%	58 / 104 = 56%
Female	142 / 200 = 71%	153 / 224 = 68%	196 / 291 = 67%	207 / 318 = 65%	135 / 239 = 56%	116 / 204 = 57%
White	157 / 225 = 70%	161 / 236 = 68%	201 / 289 = 70%	196 / 296 = 66%	128 / 219 = 58%	114 / 183 = 62%
Black	40 / 58 = 69%	54 / 79 = 68%	56 / 96 = 58%	51 / 90 = 57%	41 / 80 = 51%	31 / 78 = 40%
Hispanic	15 / 19 = 79%	17 / 21 = 81%	20 / 26 = 77%	9 / 23 = 39%	13 / 18 = 72%	10 / 16 = 63%
Pell Receiving	127 / 200 = 64%	138 / 210 = 66%	179 / 288 = 62%	177 / 296 = 60%	134 / 229 = 59%	103 / 188 = 55%
Non-Pell Receiving	101 / 132 = 77%	126 / 164 = 77%	122 / 161 = 76%	102 / 146 = 70%	84 / 130 = 65%	71 / 120 = 59%
1st Generation	162 / 231 = 70%	198 / 279 = 71%	214 / 324 = 66%	203 / 333 = 61%	165 / 256 = 64%	139 / 241 = 58%
Non-1st Generation	66 / 101 = 65%	66 / 95 = 69%	87 / 125 = 70%	76 / 109 = 70%	45 / 103 = 44%	35 / 67 = 52%
DEVR to ENGL 121	18 / 25 = 72%	24 / 32 = 75%	25 / 38 = 66%	17 / 27 = 63%	10 / 18 = 56%	3 / 16 = 19%
DEVE to ENGL 121	27 / 39 = 69%	36 / 48 = 75%	50 / 71 = 70%	31 / 43 = 72%	21 / 29 = 72%	8 / 21 = 38%
ENGL 121 to 101	60 / 83 = 72%	64 / 82 = 78%	49 / 81 = 60%	60 / 90 = 67%	36 / 64 = 56%	31 / 53 = 58%
DEVM to MATH 107	15 / 22 = 68%	14 / 30 = 47%	29 / 58 = 50%	41 / 83 = 49%	44 / 76 = 58%	30 / 63 = 48%
MATH 107/108 to 115	81 / 121 = 67%	106 / 142 = 75%	123 / 161 = 76%	98 / 149 = 66%	87 / 150 = 58%	88 / 133 = 66%
MATH 108 to 111	27 / 42 = 64%	20 / 40 = 50%	25 / 40 = 63%	32 / 50 = 64%	12 / 22 = 55%	14 / 22 = 64%

Data Source: Institutional Effectiveness Office

**Methodology:** Included are students who enrolled in the following course during the given fiscal year and prerequisite courses at an earlier time.



### KPI 2a Developmental Advancement, Allocations

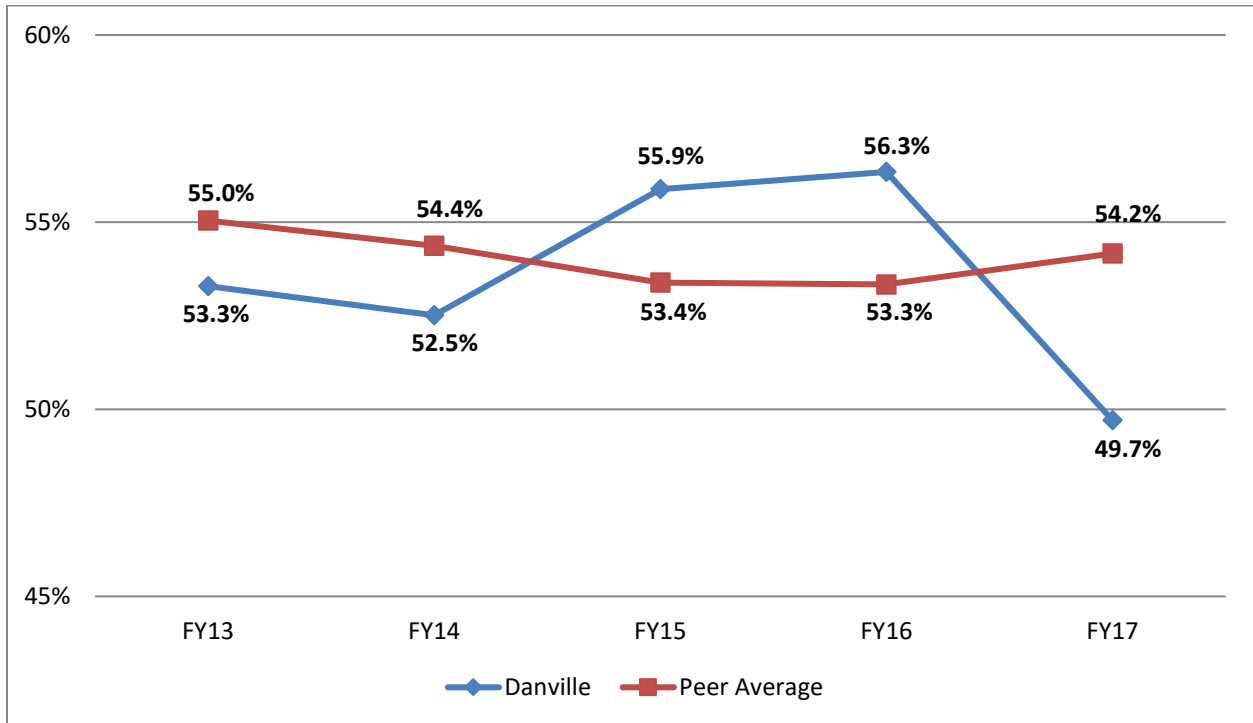


Performance Yrs	FY08 - FY09	FY10 - FY11	FY11 - FY13	FY13 - FY14	FY14 - FY15
Funding Yr	FY13	FY14	*	FY17	FY18
Danville	\$692	\$4,905	*	\$0	\$3,270
Peer Average	\$2,902	\$2,299	*	\$2,991	\$1,189
Highland	\$1,679	\$0	*	\$1,295	\$1,270
Kaskaskia	\$0	\$2,161	*	\$205	\$220
Kishwaukee	\$1,525	\$0	*	\$0	\$4,295
Rend Lake	\$2,012	\$0	*	\$1,345	\$0
Sandburg	\$0	\$0	*	\$5,350	\$2,715
Sauk Valley	\$0	\$474	*	\$7,115	\$0
Shawnee	\$2,561	\$8,180	*	\$4,055	\$2,270
Southeastern	\$8,512	\$1,492	*	\$640	\$0
Spoon River	\$2,606	\$1,649	*	\$8,195	\$1,115
Wood	\$10,128	\$9,032	*	\$1,705	\$0

Data Source: ICCB Performance Metrics [https://www.iccb.org/iccb/wp-content/pdfs/faqs/6M3\\_Remedial\\_Advancement\\_FY06-17.pdf](https://www.iccb.org/iccb/wp-content/pdfs/faqs/6M3_Remedial_Advancement_FY06-17.pdf)

**Methodology:** Information collected from the ICCB Performance Metric Advancement to College Level Work by Remedial Students compiled from A1 reports. Funding is based on percentage improvement between two prior fiscal years.

## KPI 2a Developmental Advancement, Remedial Students who Returned

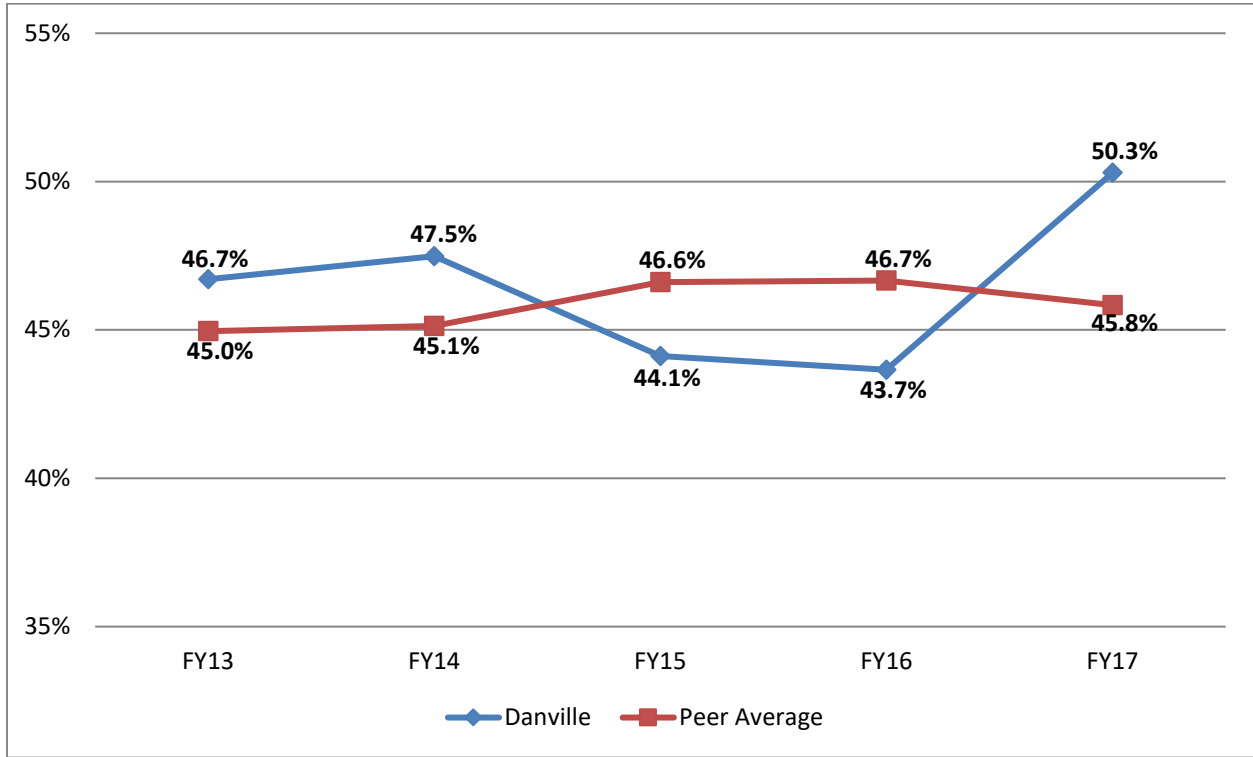


	FY 2013	FY 2014	FY 2015	FY 2016	FY 2017
Danville	527 of 989 = 53.3%	502 of 956 = 52.5%	499 of 893 = 55.9%	382 of 678 = 56.3%	252 of 507 = 49.7%
Peer Average	521 of 947 = 55.0%	467 of 859 = 54.4%	400 of 749 = 53.4%	346 of 649 = 53.3%	303 of 559 = 54.2%
Highland	568 of 1043 = 54.5%	532 of 960 = 55.4%	455 of 857 = 53.1%	403 of 717 = 56.2%	387 of 684 = 56.6%
Kaskaskia	878 of 1420 = 61.8%	828 of 1408 = 58.8%	680 of 1185 = 57.4%	518 of 940 = 55.1%	395 of 759 = 52.0%
Kishwaukee	1107 of 2227 = 49.7%	1016 of 2124 = 47.8%	918 of 1924 = 47.7%	700 of 1580 = 44.3%	637 of 1338 = 47.6%
Rend Lake	333 of 649 = 51.3%	317 of 608 = 52.1%	275 of 547 = 50.3%	261 of 493 = 52.9%	204 of 386 = 52.8%
Sandburg	465 of 841 = 55.3%	418 of 800 = 52.3%	379 of 716 = 52.9%	356 of 607 = 58.6%	292 of 495 = 59.0%
Sauk Valley	432 of 858 = 50.3%	390 of 703 = 55.5%	321 of 584 = 55.0%	333 of 625 = 53.3%	313 of 566 = 55.3%
Shawnee	418 of 679 = 61.6%	377 of 611 = 61.7%	323 of 572 = 56.5%	236 of 414 = 57.0%	233 of 402 = 58.0%
Southeastern	169 of 280 = 60.4%	143 of 237 = 60.3%	140 of 259 = 54.1%	163 of 296 = 55.1%	161 of 270 = 59.6%
Spoon River	282 of 473 = 59.6%	257 of 410 = 62.7%	222 of 340 = 65.3%	219 of 356 = 61.5%	185 of 297 = 62.3%
Wood	561 of 1001 = 56.0%	394 of 733 = 53.8%	285 of 505 = 56.4%	272 of 461 = 59.0%	223 of 397 = 56.2%

Data Source: ICCB Performance Metrics [https://www.iccb.org/iccb/wp-content/pdfs/faqs/6M3\\_Remedial\\_Advancement\\_FY06-17.pdf](https://www.iccb.org/iccb/wp-content/pdfs/faqs/6M3_Remedial_Advancement_FY06-17.pdf)

**Methodology:** Information collected from the ICCB Performance Metric Advancement to College Level Work by Remedial Students compiled from A1 reports.

## KPI 2a Developmental Advancement, Remedial Students who Advanced to College Level

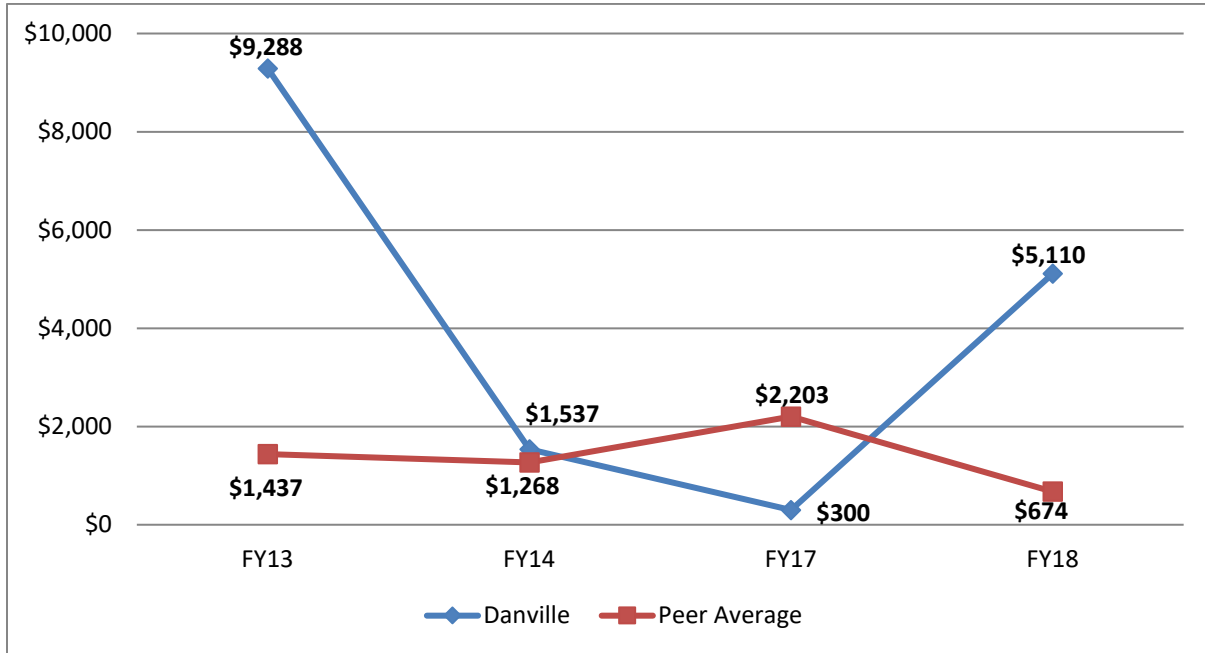


	FY 2013	FY 2014	FY 2015	FY 2016	FY 2017
Danville	462 of 989 = 46.7%	454 of 956 = 47.5%	394 of 893 = 44.1%	296 of 678 = 43.7%	255 of 507 = 50.3%
Peer Average	426 of 947 = 45.0%	388 of 859 = 45.1%	349 of 749 = 46.6%	303 of 649 = 46.7%	256 of 559 = 45.8%
Highland	475 of 1043 = 45.5%	428 of 960 = 44.6%	402 of 857 = 46.9%	314 of 717 = 43.8%	297 of 684 = 43.4%
Kaskaskia	542 of 1420 = 38.2%	580 of 1408 = 41.2%	505 of 1185 = 42.6%	422 of 940 = 44.9%	364 of 759 = 48.0%
Kishwaukee	1120 of 2227 = 50.3%	1016 of 2124 = 47.8%	1006 of 1924 = 52.3%	880 of 1580 = 55.7%	701 of 1338 = 52.4%
Rend Lake	316 of 649 = 48.7%	291 of 608 = 47.9%	272 of 547 = 49.7%	232 of 493 = 47.1%	182 of 386 = 47.2%
Sandburg	376 of 841 = 44.7%	382 of 800 = 47.8%	337 of 716 = 47.1%	251 of 607 = 41.4%	203 of 495 = 41.0%
Sauk Valley	426 of 858 = 49.7%	313 of 703 = 44.5%	263 of 584 = 45.0%	292 of 625 = 46.7%	253 of 566 = 44.7%
Shawnee	261 of 679 = 38.4%	234 of 611 = 38.3%	249 of 572 = 43.5%	178 of 414 = 43.0%	169 of 402 = 42.0%
Southeastern	111 of 280 = 39.6%	143 of 237 = 60.3%	119 of 259 = 45.9%	133 of 296 = 44.9%	109 of 270 = 40.4%
Spoon River	191 of 473 = 40.4%	153 of 410 = 37.3%	118 of 340 = 34.7%	137 of 356 = 38.5%	112 of 297 = 37.7%
Wood	440 of 1001 = 44.0%	339 of 733 = 46.2%	220 of 505 = 43.6%	189 of 461 = 41.0%	174 of 397 = 43.8%

Data Source: ICCB Performance Metrics [https://www.iccb.org/iccb/wp-content/pdfs/faqs/6M3\\_Remedial\\_Advancement\\_FY06-17.pdf](https://www.iccb.org/iccb/wp-content/pdfs/faqs/6M3_Remedial_Advancement_FY06-17.pdf)

**Methodology:** Information collected from the ICCB Performance Metric Advancement to College Level Work by Remedial Students compiled from A1 reports.

## KPI 2b: Momentum Points, Allocations

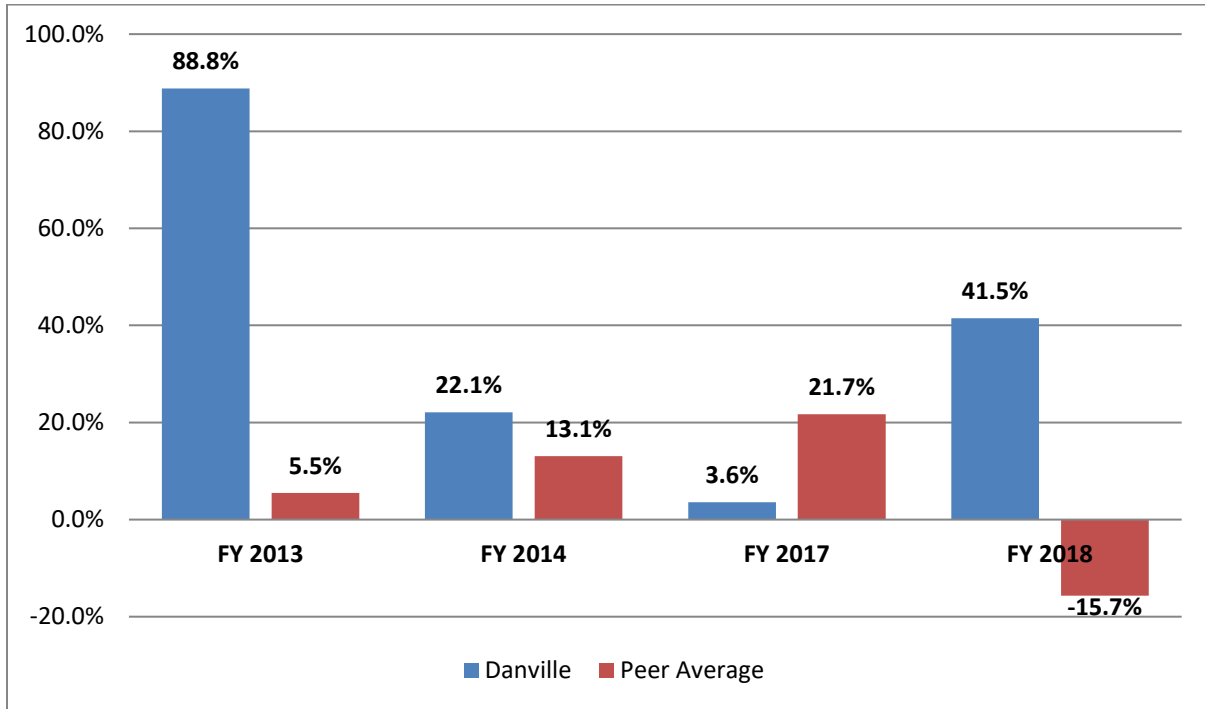


Performance Yrs	FY09 - FY10	FY11 - FY12	FY12 - FY14	FY14 - FY15	FY15 - FY16
Funding Yr	FY13	FY14	*	FY17	FY18
Danville	\$9,288	\$1,537	*	\$300	\$5,110
Peer Average	\$1,437	\$1,268	*	\$2,203	\$674
Highland	\$2,189	\$318	*	\$60	\$4,085
Kaskaskia	\$1,463	\$3,692	*	\$0	\$0
Kishwaukee	\$0	\$3,675	*	\$2,785	\$0
Rend Lake	\$1,590	\$2,616	*	\$0	\$2,650
Sandburg	\$0	\$1,544	*	\$1,735	\$0
Sauk Valley	\$477	\$112	*	\$5,860	\$0
Shawnee	\$5,420	\$616	*	\$160	\$0
Southeastern	\$0	\$0	*	\$0	\$0
Spoon River	\$3,227	\$0	*	\$7,980	\$0
Wood	\$0	\$111	*	\$3,445	\$0

Data Source: ICCB Performance Metrics [https://www.iccb.org/financial\\_compliance/budgets-allocations/performance-based-funding/](https://www.iccb.org/financial_compliance/budgets-allocations/performance-based-funding/) Table 6

**Methodology:** Information collected from the ICCB Performance Metric Momentum Points is a sum of three independent metric increases from the previous year: (1) percent of new students earning appropriate credits in their first year, 24 for full-time and 12 for part-time students, (2) percent of adult education students achieving a level gain, which is approximately a two grade reading level increase, and (3) percent of adult education students advancing to college level coursework. Funding is based on percentage improvement between two prior fiscal years.

## KPI 2b: Momentum Points



### Total Performance

Funding Yr	FY 2013	FY 2014	FY 2015/FY 2016	FY 2017	FY 2018
Danville	88.8%	22.1%	*	3.6%	41.5%
Peer Average	5.5%	13.1%	*	21.7%	-15.7%
Highland	18.6%	4.6%	*	0.7%	33.2%
Kaskaskia	14.0%	53.2%	*	-10.5%	-42.1%
Kishwaukee	-1.5%	52.9%	*	33.0%	-18.1%
Rend Lake	15.2%	37.7%	*	-14.7%	21.5%
Sandburg	-34.5%	22.2%	*	20.6%	-15.7%
Sauk Valley	4.6%	1.6%	*	69.4%	-7.9%
Shawnee	51.8%	8.9%	*	1.9%	-8.7%
Southeastern	-41.6%	-17.7%	*	-19.0%	-13.3%
Spoon River	30.9%	-33.5%	*	94.5%	-76.2%
Wood	-2.6%	1.6%	*	40.8%	-29.2%

Data Source: ICCB Performance Metrics [https://www.iccb.org/financial\\_compliance/budgets-allocations/performance-based-funding/](https://www.iccb.org/financial_compliance/budgets-allocations/performance-based-funding/)

**Methodology:** Information collected from the ICCB Performance Metric Momentum Points is a sum of three independent metric increases from the previous year: (1) percent of new students earning appropriate credits in their first year, 24 for full-time and 12 for part-time students, (2) percent of adult education students achieving a level gain, which is approximately a two grade reading level increase, and (3) percent of adult education students advancing to college level coursework.

## KPI 2b: Momentum Points, continued

### New Student Advancement Increase (Full-time earning 24 credits, Part-time earning 12 credits)

	FY08 - FY09	FY10 - FY11	FY11 - FY13	FY13 - FY14	FY14 - FY15
Danville	53.0%	1.4%		-1.9%	5.8%
Peer Average	3.9%	0.3%		-4.3%	-0.8%
Highland	21.9%	17.1%	*	-3.8%	47.8%
Kaskaskia	50.0%	36.2%	*	-23.5%	-39.3%
Kishwaukee	-12.5%	30.7%	*	12.1%	0.3%
Rend Lake	1.4%	9.7%	*	-55.2%	39.1%
Sandburg	-20.8%	19.0%	*	9.4%	-15.7%
Sauk Valley	-20.0%	-13.1%	*	17.4%	-10.4%
Shawnee	35.7%	2.7%	*	-28.2%	-18.7%
Southeastern	-16.5%	-40.6%	*	-23.8%	14.8%
Spoon River	9.6%	-53.3%	*	33.9%	-21.7%
Wood	-10.0%	-5.5%	*	19.1%	-4.5%

### Adult Ed Advancement Increase

	FY09 - FY10	FY11 - FY12	FY12 - FY14	FY14 - FY15	FY15 - FY16
Danville	40.4%	-3.0%		5.4%	32.9%
Peer Average	4.8%	5.5%		16.5%	-6.0%
Highland	-3.9%	-16.3%	*	-4.1%	19.7%
Kaskaskia	1.7%	16.0%	*	14.1%	-0.7%
Kishwaukee	17.5%	17.6%	*	-2.9%	-13.8%
Rend Lake	14.8%	24.6%	*	30.0%	-7.1%
Sandburg	-1.2%	-3.7%	*	5.1%	0.6%
Sauk Valley	16.9%	1.4%	*	38.3%	12.7%
Shawnee	3.4%	-10.3%	*	15.9%	10.4%
Southeastern	-16.5%	13.9%	*	-13.5%	-17.9%
Spoon River	16.6%	9.2%	*	63.9%	-55.9%
Wood	-1.3%	2.4%	*	18.1%	-7.5%

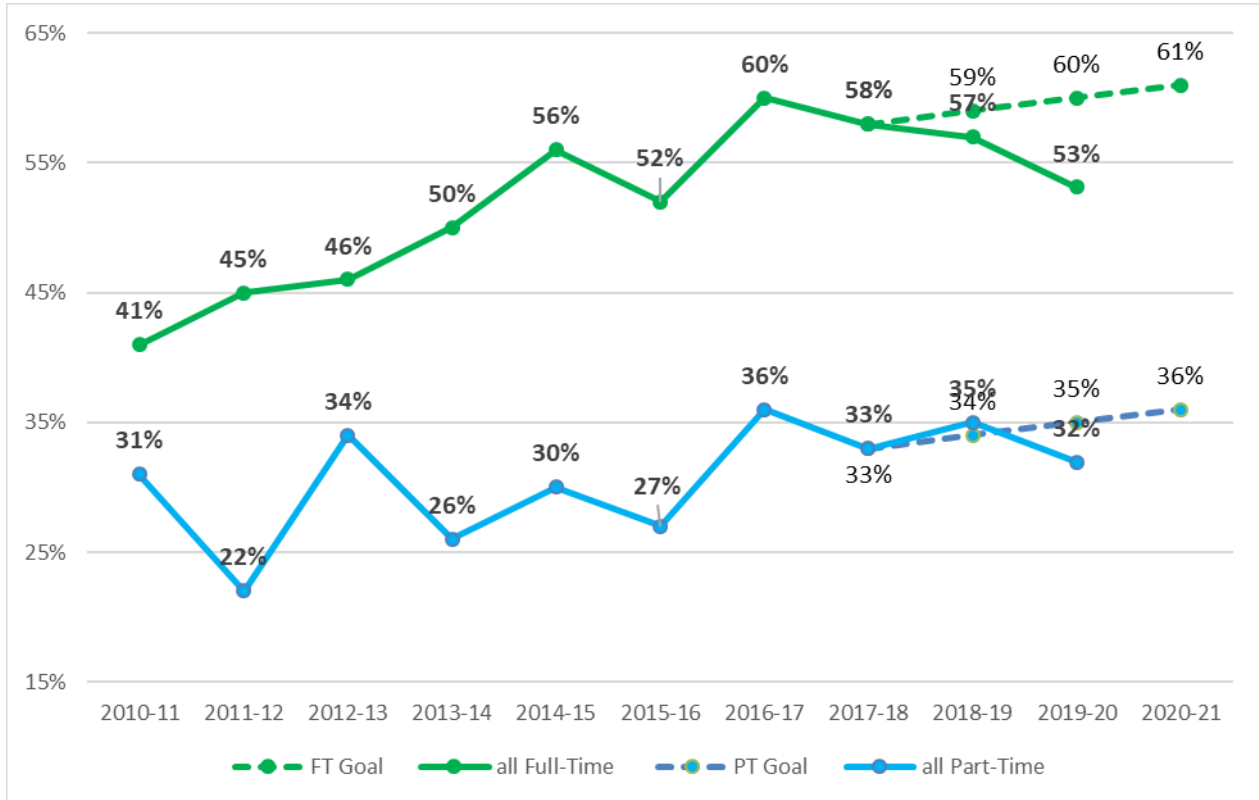
### Adult Ed Completion Increase

	FY10 - FY11	FY11 - FY12	FY12 - FY14	FY14 - FY15	FY15 - FY16
Danville	-4.6%	23.7%		0.1%	2.8%
Peer Average	-2.6%	7.4%		9.5%	-5.2%
Highland	6.7%	3.8%	*	8.6%	2.2%
Kaskaskia	-37.8%	1.0%	*	-1.1%	-2.1%
Kishwaukee	-6.5%	4.6%	*	23.7%	-4.6%
Rend Lake	-1.0%	3.5%	*	10.6%	-10.4%
Sandburg	-12.5%	7.0%	*	6.1%	-0.6%
Sauk Valley	7.7%	13.4%	*	13.7%	-10.2%
Shawnee	12.8%	16.4%	*	14.2%	-0.3%
Southeastern	-8.6%	9.1%	*	18.3%	-10.2%
Spoon River	4.7%	10.6%	*	-2.7%	1.5%
Wood	8.5%	4.7%	*	3.6%	-17.1%

Data Source:ICCB Performance Metrics [https://www.iccb.org/financial\\_compliance/budgets-allocations/performance-based-funding/](https://www.iccb.org/financial_compliance/budgets-allocations/performance-based-funding/)

**Methodology:** Information collected from the ICCB Performance Metric Momentum Points is a sum of three independent metric increases from the previous year: (1) percent of new students earning appropriate credits in their first year, 24 for full-time and 12 for part-time students, (2) percent of adult education students achieving a level gain, which is approximately a two grade reading level increase, and (3) percent of adult education students advancing to college level coursework.

## KPI 2c: Full-time Students Earning 24 and Part-time Students Earning 12 Credits in Their First Year (Persistence)



	2010-11	2011-12	2012-13	2013-14	2014-15	2015-16	2016-17	2017-18	2018-19	2019-20	2020-21	2020-22
<b>FT Goal</b>								<b>58%</b>	<b>59%</b>	<b>60%</b>	<b>61%</b>	<b>61%</b>
all Full-Time	41%	45%	46%	50%	56%	52%	60%	58%	57%	53%		
<b>PT Goal</b>								<b>33%</b>	<b>34%</b>	<b>35%</b>	<b>36%</b>	<b>36%</b>
all Part-Time	31%	22%	34%	26%	30%	27%	36%	33%	35%	32%		

\*Fall cohort students enrolled in a Title IV program, using a D grade or better, including developmental and excluding CCE and Adult Education credits. First academic year includes the summer preceding through the next summer.

Data Source: Institutional Effectiveness Office (Fall Cohort Students enrolled in a program of at least 15 credits, using grade D or better, excluding most Adult Ed, CCE and DoC classes)

**Methodology:** Included are new fall cohort students enrolled in a Title IV program of study with success being defined as earning any passing grade in credited undergraduate courses and accumulating 12 for part-time and 24 for full-time students.

**KPI 2c: Full-time Students Earning 24 and Part-time Students Earning 12 Credits in Their First Year (Persistence), continued**

**First-Time Full-Time Students Completing 24 Credits in Their First Academic Year\***

	2010-2011	2011-2012	2012-2013	2013-2014	2014-2015	2015-2016	2016-2017	2017-2018	2018-2019	2019-2020
	count	count	count	count	count	count	count	count	count	count
All	376 41%	325 45%	320 46%	372 50%	388 56%	344 52%	341 60%	320 58%	289 57%	273 53%
White	287 45%	250 46%	251 51%	286 53%	303 58%	261 56%	264 64%	242 62%	211 62%	196 59%
Black	48 17%	41 24%	38 21%	50 38%	32 66%	38 26%	29 38%	33 42%	28 29%	32 31%
Hispanic	19 32%	14 71%	11 55%	11 36%	19 47%	11 18%	18 50%	14 57%	21 62%	14 43%
Other	22 45%	20 55%	20 30%	25 48%	34 35%	34 62%	30 57%	31 48%	29 52%	31 45%
Male	185 41%	159 45%	165 47%	191 51%	163 50%	160 54%	148 62%	160 56%	130 52%	126 54%
Female	191 41%	166 45%	155 46%	181 49%	225 60%	184 50%	193 59%	160 61%	159 61%	147 52%
Pell	246 31%	191 35%	186 38%	214 43%	224 50%	198 41%	184 49%	187 50%	148 47%	134 47%
Non-Pell	130 59%	134 60%	134 57%	158 59%	164 65%	146 66%	157 74%	133 71%	141 67%	139 59%

**First-Time Part-Time Students Completing 12 Credits in Their First Academic Year\***

	2010-2011	2011-2012	2012-2013	2013-2014	2014-2015	2015-2016	2016-2017	2017-2018	2018-2019	2019-2020
	count	count	count	count	count	count	count	count	count	count
All	212 31%	223 22%	207 34%	189 26%	189 30%	194 27%	143 36%	130 33%	94 35%	72 32%
White	143 36%	153 25%	144 40%	119 31%	126 37%	120 33%	95 42%	74 34%	53 38%	42 43%
Black	41 12%	49 16%	40 20%	43 16%	45 18%	48 8%	32 25%	34 26%	26 27%	19 16%
Hispanic	13 46%	7 0%	14 14%	14 29%	10 10%	8 50%	5 0%	7 14%	1 #####	3 67%
Other	15 27%	14 29%	9 22%	13 15%	8 25%	18 28%	11 27%	15 53%	9 56%	8 0%
Male	90 29%	78 23%	79 28%	76 25%	77 22%	97 18%	55 42%	51 29%	41 27%	27 37%
Female	122 33%	145 22%	128 38%	113 27%	112 36%	97 36%	88 32%	79 35%	53 42%	45 29%
Pell	131 37%	138 28%	112 36%	115 30%	100 33%	81 37%	59 47%	68 34%	45 40%	37 35%
Non-Pell	81 22%	85 13%	95 32%	74 20%	89 27%	113 19%	84 27%	62 32%	49 31%	35 29%

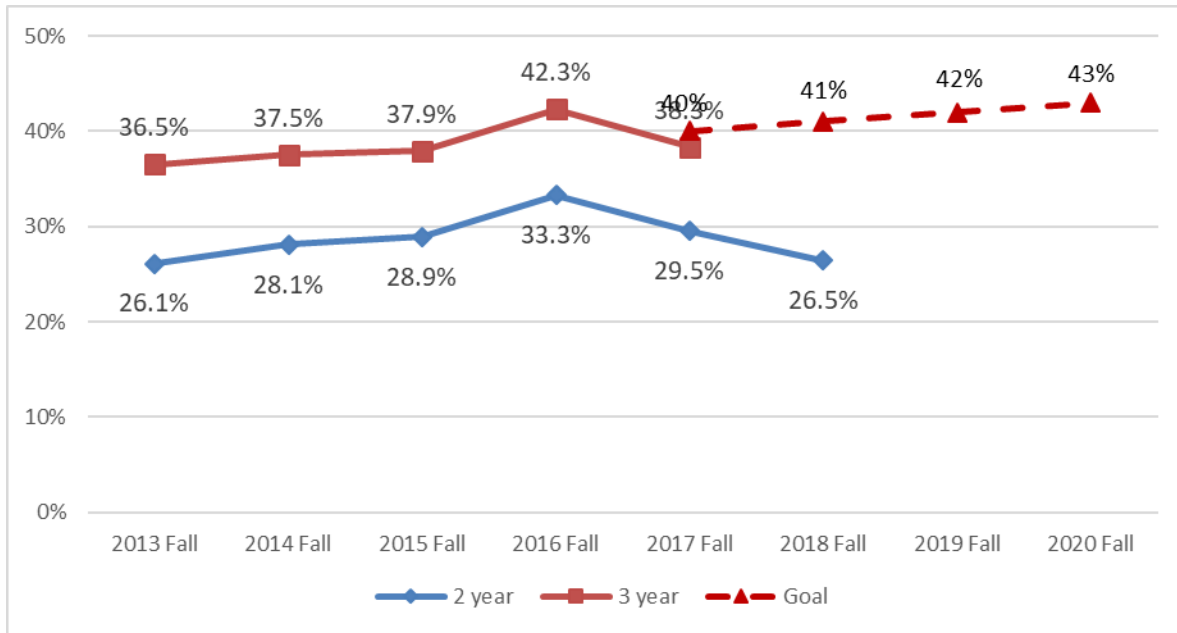
\*Fall cohort students enrolled in a Title IV program, using a D grade or better, including developmental and excluding CCE and Adult Education credits. First academic year includes the summer preceding through the next

Data Source: Institutional Effectiveness Office (Fall Cohort Students enrolled in a program of at least 15 credits, using grade D or better, excluding most Adult Ed, CCE and DoC classes)

**Methodology:** Included are new fall cohort students enrolled in a Title IV program of study with success being defined as earning any passing grade in credited undergraduate courses and accumulating 12 for part-time and 24 for full-time students.



### KPI 3a: DACC 2 and 3-year Graduation Rates for Full-time Students



#### DACC Three Year Graduation Rates, for First-time Full-time Fall-entering students

Cohort	2013 Fall cohort			2014 Fall cohort			2015 Fall cohort			2016 Fall cohort			2017 Fall cohort							
	162	of	444	36%	147	of	392	38%	122	of	322	38%	146	of	345	42%	118	of	308	38%
Black Male	6	of	35	17%	7	of	24	29%	3	of	17	18%	3	of	13	23%	3	of	18	17%
Black Female	7	of	29	24%	10	of	32	31%	5	of	24	21%	4	of	18	22%	2	of	14	14%
Hispanic Male	2	of	9	22%	3	of	7	43%	0	of	5	0%	2	of	8	25%	2	of	7	29%
Hispanic Female	0	of	4	0%	3	of	12	25%	0	of	6	0%	3	of	10	30%	2	of	7	29%
White Male	52	of	141	37%	42	of	123	34%	46	of	117	39%	54	of	113	48%	39	of	109	36%
White Female	77	of	184	42%	71	of	154	46%	54	of	118	46%	64	of	139	46%	59	of	121	49%
Other/Unk. Male	11	of	24	46%	4	of	14	29%	7	of	12	58%	5	of	12	42%	5	of	15	33%
Other/Unk. Female	7	of	15	47%	7	of	17	41%	7	of	19	37%	11	of	18	61%	5	of	17	29%

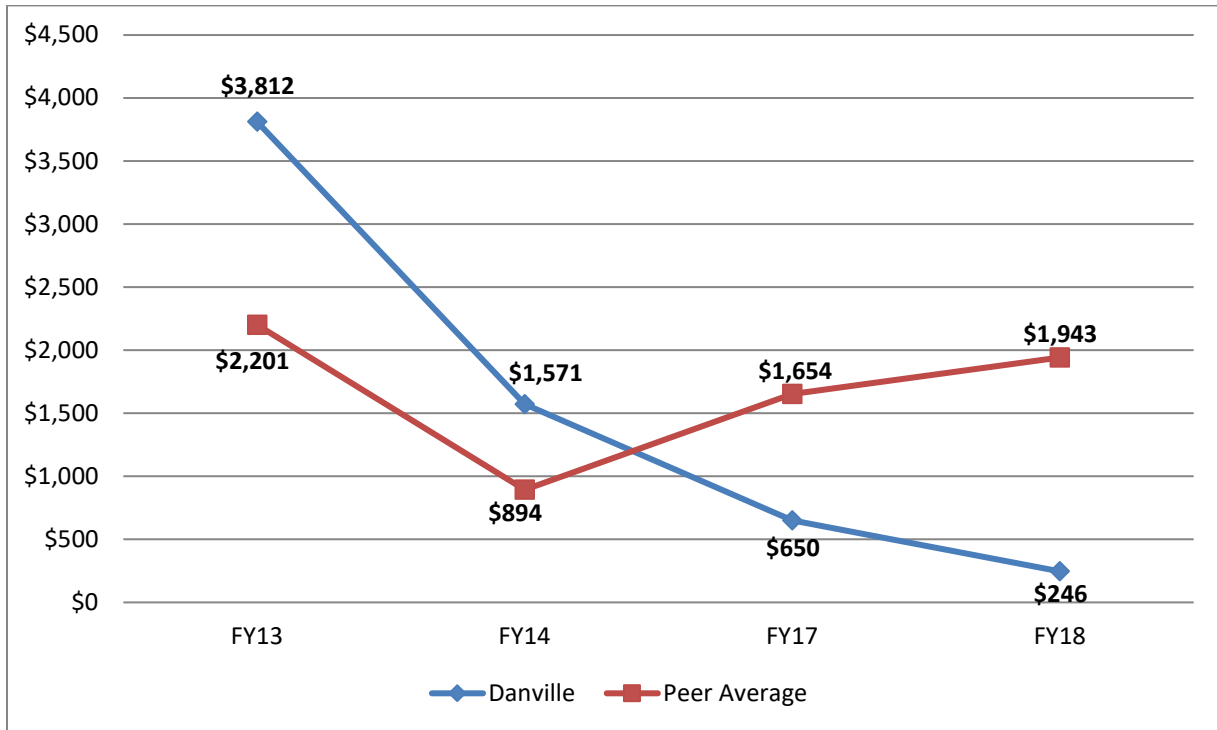
#### DACC Two Year Graduation Rates, for First-time Full-time Fall-entering students

Cohort	2013 Fall cohort			2014 Fall cohort			2015 Fall cohort			2016 Fall cohort			2017 Fall cohort			2018 Fall cohort								
	116	of	444	26%	110	of	392	28%	93	of	322	29%	115	of	345	33%	91	of	308	30%	68	of	257	26%
Black Male	5	of	35	14%	4	of	24	17%	2	of	17	12%	3	of	13	23%	3	of	18	17%	1	of	15	7%
Black Female	5	of	29	17%	8	of	32	25%	4	of	24	17%	3	of	18	17%	0	of	14	0%	1	of	17	6%
Hispanic Male	1	of	9	11%	3	of	7	43%	0	of	5	0%	1	of	8	13%	2	of	7	29%	4	of	5	80%
Hispanic Female	0	of	4	0%	3	of	12	25%	0	of	6	0%	3	of	10	30%	3	of	7	43%	3	of	11	27%
White Male	41	of	141	29%	29	of	123	24%	37	of	117	32%	46	of	113	41%	29	of	109	27%	23	of	84	27%
White Female	51	of	184	28%	54	of	154	35%	39	of	118	33%	46	of	139	33%	46	of	121	38%	33	of	105	31%
Other/Unk. Male	7	of	24	29%	4	of	14	29%	6	of	12	50%	4	of	12	33%	4	of	15	27%	2	of	10	20%
Other/Unk. Female	5	of	15	33%	5	of	17	29%	5	of	19	26%	9	of	18	50%	4	of	17	24%	1	of	10	10%

Data Source: Institutional Effectiveness Office, tracking students from the E1 report

**Methodology:** Included are new fall degree or certificate seeking students, defined as such in the E1 report, with success being defined as earning any credential within the given time

**KPI 3b: Degree and Certificate Increase, Total Combined Allocation**



Performance Yrs	FY08 - FY09	FY10 - FY11	FY11 - FY13	FY13 - FY14	FY14 - FY15
Funding Yr	FY13	FY14	*	FY17	FY18
Danville	\$3,812	\$1,571	*	\$650	\$246
Peer Average	\$2,201	\$894	*	\$1,654	\$1,943
Highland	\$984	\$423	*	\$2,290	\$8,442
Kaskaskia	\$301	\$925	*	\$505	\$55
Kishwaukee	\$1,114	\$453	*	\$670	\$0
Rend Lake	\$4,597	\$3,710	*	\$0	\$1,960
Sandburg	\$258	\$533	*	\$3,465	\$1,027
Sauk Valley	\$3,202	\$1,364	*	\$780	\$574
Shawnee	\$4,155	\$649	*	\$0	\$1,489
Southeastern	\$832	\$416	*	\$2,720	\$3,496
Spoon River	\$5,848	\$153	*	\$5,720	\$370
Wood	\$719	\$309	*	\$390	\$2,021

Data Source:ICCB Performance Metrics [https://www.iccb.org/financial\\_compliance/budgets-allocations/performance-based-funding/](https://www.iccb.org/financial_compliance/budgets-allocations/performance-based-funding/)

**Methodology:** Information collected from the ICCB Performance Metric Degree & Certificate Completion looks at the sum of degree and certificate awards percentage increases.

### KPI 3b: Degree and Certificate Increase, continued

#### Degree Increase

	FY08 - FY09	FY10 - FY11	FY11 - FY13	FY13 - FY14	FY14 -FY15
Danville	-10.0%	81.4%	*	3.1%	-13.5%
Peer Average	2.3%	28.2%	*	-6.4%	1.9%
Highland	-10.0%	21.9%	*	-9.1%	-9.3%
Kaskaskia	-14.3%	47.9%	*	3.2%	-3.2%
Kishwaukee	-4.7%	23.5%	*	2.2%	-15.0%
Rend Lake	24.3%	11.5%	*	-13.7%	16.2%
Sandburg	1.2%	27.6%	*	-4.2%	5.4%
Sauk Valley	10.0%	70.6%	*	4.0%	4.6%
Shawnee	9.5%	33.6%	*	-12.9%	-5.1%
Southeastern	7.4%	21.6%	*	-22.9%	20.9%
Spoon River	-6.9%	7.9%	*	6.6%	-10.4%
Wood	6.4%	16.0%	*	-17.5%	14.9%

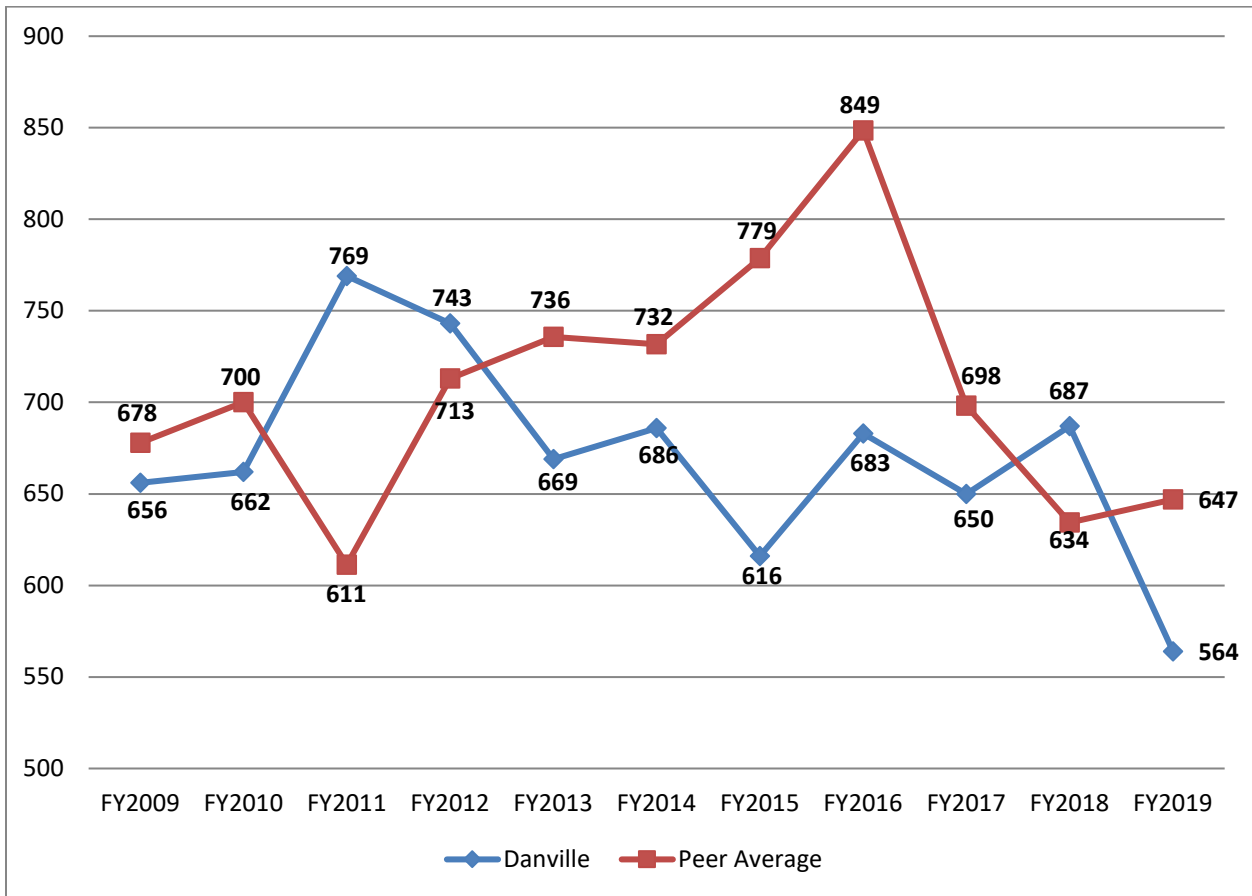
#### Certificate Increase

	FY08 - FY09	FY10 - FY11	FY11 - FY13	FY13 - FY14	FY14 -FY15
Danville	62.0%	-43.2%	*	2.5%	-4.9%
Peer Average	23.4%	-45.3%	*	15.9%	23.7%
Highland	17.5%	-37.3%	*	36.8%	221.2%
Kaskaskia	5.4%	-58.7%	*	-10.8%	1.5%
Kishwaukee	12.2%	-55.2%	*	5.1%	-17.3%
Rend Lake	33.1%	17.5%	*	-1.7%	-24.5%
Sandburg	2.1%	-32.1%	*	27.9%	-2.4%
Sauk Valley	36.8%	-71.0%	*	-1.2%	-6.0%
Shawnee	54.7%	-66.5%	*	-11.2%	39.0%
Southeastern	-11.9%	-70.9%	*	43.8%	25.2%
Spoon River	103.8%	-65.4%	*	75.0%	-5.7%
Wood	-20.2%	-13.4%	*	-4.3%	5.7%

Data Source:ICCB Performance Metrics [https://www.iccb.org/financial\\_compliance/budgets-allocations/performance-based-funding/](https://www.iccb.org/financial_compliance/budgets-allocations/performance-based-funding/)

**Methodology:** Information collected from the ICCB Performance Metric Degree & Certificate Completion looks at the sum of degree and certificate awards percentage increases.

### KPI 3c: Degree and Certificate Completions, Total Degrees and Certificates



	FY2009	FY2010	FY2011	FY2012	FY2013	FY2014	FY2015	FY2016	FY2017	FY2018	FY2019
Danville	656	662	769	743	669	686	616	683	650	687	564
Peer Average	678	700	611	713	736	732	779	849	698	634	647
Highland	336	396	467	495	431	396	505	767	625	550	571
Kaskaskia	1014	1137	756	1351	1627	1584	1711	1494	992	969	906
Kishwaukee	781	860	583	1002	869	929	783	734	981	807	768
Rend Lake	1265	1235	1342	1304	1364	1252	1390	2218	1202	1095	1181
Sandburg	392	373	397	446	457	537	535	470	480	483	583
Sauk Valley	884	893	814	795	777	849	808	765	666	596	691
Shawnee	578	643	500	553	597	520	651	544	550	522	525
Southeastern	535	522	328	333	357	389	508	554	438	395	294
Spoon River	485	389	318	260	330	388	359	436	541	460	486
Wood	508	553	608	591	548	473	537	503	506	466	465

Data Source: ICCB Data and Characteristics

**Methodology:** Included are counts of degrees and certificates awarded.

### KPI 3c: Degree and Certificate Completions, continued

#### Total Associate in Applied Science

	FY2009	FY2010	FY2011	FY2012	FY2013	FY2014	FY2015	FY2016	FY2017	FY2018	FY2019
Danville	122	137	142	166	132	164	130	155	135	148	109
Peer Average	137	134	154	160	156	130	134	128	124	121	116
Highland	81	113	139	149	141	110	86	90	73	91	91
Kaskaskia	244	252	267	297	257	284	308	280	255	255	223
Kishwaukee	127	142	163	180	176	157	148	152	143	145	129
Rend Lake	349	277	339	370	363	204	251	226	257	213	234
Sandburg	124	123	174	140	162	138	135	134	108	123	115
Sauk Valley	100	89	111	114	120	120	117	101	95	100	96
Shawnee	73	55	73	78	64	55	51	58	68	72	53
Southeastern	107	76	59	67	102	65	103	92	83	73	64
Spoon River	66	57	41	55	57	66	43	35	65	44	66
Wood	100	156	176	147	119	99	93	107	96	96	92

#### Total Certificates

	FY2009	FY2010	FY2011	FY2012	FY2013	FY2014	FY2015	FY2016	FY2017	FY2018	FY2019
Danville	413	413	491	439	343	344	321	323	304	314	252
Peer Average	327	337	237	317	341	370	408	486	333	302	281
Highland	74	76	126	134	85	92	230	503	327	286	279
Kaskaskia	571	610	233	737	1046	977	1102	898	489	485	457
Kishwaukee	359	366	82	403	367	406	332	255	353	327	292
Rend Lake	487	481	640	566	584	694	732	1651	602	601	505
Sandburg	144	141	99	176	142	232	222	129	141	125	117
Sauk Valley	610	640	548	506	499	557	503	487	403	366	361
Shawnee	314	372	225	243	252	217	357	260	294	244	254
Southeastern	288	337	132	109	119	175	232	260	181	170	124
Spoon River	269	172	83	69	102	146	140	230	334	258	266
Wood	158	178	202	225	216	203	227	182	208	157	156

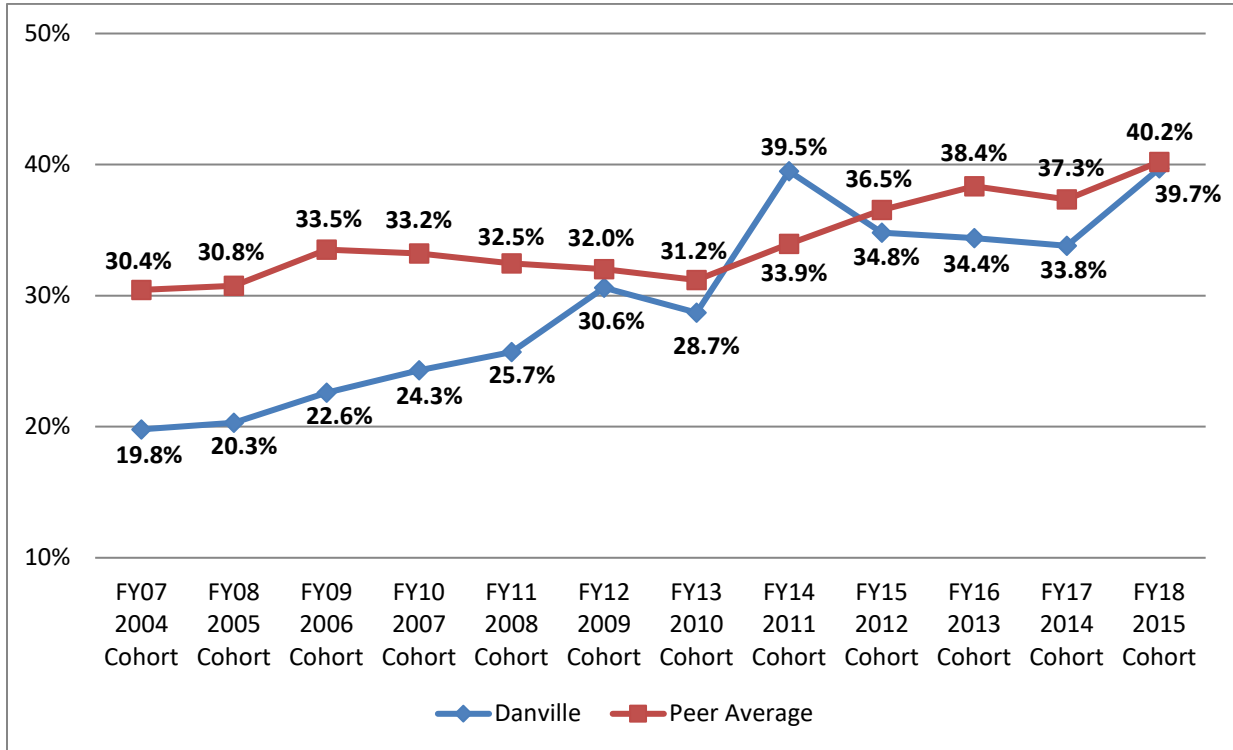
#### Total Transfer and AGS Degrees

	FY2009	FY2010	FY2011	FY2012	FY2013	FY2014	FY2015	FY2016	FY2017	FY2018	FY2019
Danville	121	112	136	138	194	178	165	205	211	225	203
Peer Average	213	229	220	237	238	232	238	236	241	211	250
Highland	181	207	202	212	205	194	189	174	225	173	201
Kaskaskia	199	275	256	317	324	323	301	316	248	229	226
Kishwaukee	295	352	338	419	326	366	303	327	485	335	347
Rend Lake	429	477	363	368	417	354	407	341	343	281	442
Sandburg	124	109	124	130	153	167	178	207	231	235	351
Sauk Valley	174	164	155	175	158	172	188	177	168	130	234
Shawnee	191	216	202	232	281	248	243	226	188	206	218
Southeastern	140	109	137	157	136	149	173	202	174	152	106
Spoon River	150	160	194	136	171	176	176	171	142	158	154
Wood	250	219	230	219	213	171	217	214	202	213	217

Data Source: ICCB Data and Characteristics

**Methodology:** Included are counts of degrees and certificates awarded.

**KPI 3d: 150% Graduation Rate**

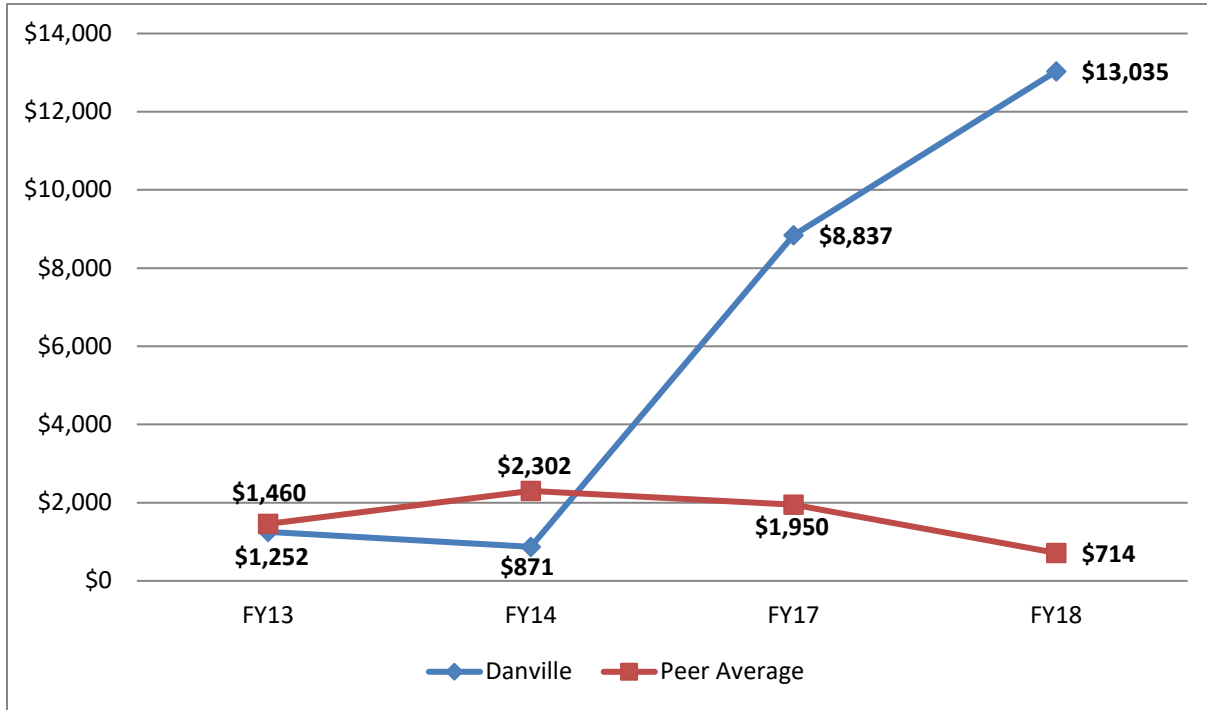


	FY07 Cohort	FY08 Cohort	FY09 Cohort	FY10 Cohort	FY11 Cohort	FY12 Cohort	FY13 Cohort	FY14 Cohort	FY15 Cohort	FY16 Cohort	FY17 Cohort	FY18 Cohort
	2004	2005	2006	2007	2008	2009	2010	2011	2012	2013	2014	2015
Danville	19.8%	20.3%	22.6%	24.3%	25.7%	30.6%	28.7%	39.5%	34.8%	34.4%	33.8%	39.7%
Peer Average	30.4%	30.8%	33.5%	33.2%	32.5%	32.0%	31.2%	33.9%	36.5%	38.4%	37.3%	40.2%
Highland	30.3%	31.9%	31.6%	30.6%	34.3%	28.3%	36.6%	28.0%	33.3%	31.7%	32.5%	41.8%
Kaskaskia	39.2%	38.7%	39.6%	44.0%	42.1%	42.4%	46.2%	48.9%	37.2%	37.9%	30.4%	31.5%
Kishwaukee	25.1%	21.6%	25.3%	22.0%	24.3%	19.1%	18.5%	28.0%	28.2%	28.9%	29.3%	32.6%
Rend Lake	39.4%	44.4%	48.1%	50.3%	53.7%	46.8%	51.2%	52.3%	51.4%	50.6%	57.8%	60.7%
Sandburg	30.5%	26.2%	30.3%	17.4%	14.6%	25.3%	25.7%	23.1%	26.6%	33.7%	30.5%	35.4%
Sauk Valley	33.1%	26.0%	33.2%	33.2%	29.3%	31.2%	29.0%	34.8%	38.3%	43.0%	40.8%	43.6%
Shawnee	28.0%	30.8%	28.3%	26.4%	26.9%	30.5%	28.0%	25.8%	36.0%	24.2%	32.8%	35.6%
Southeastern	31.1%	32.6%	33.7%	41.6%	35.9%	31.6%	23.9%	27.0%	34.6%	40.9%	39.7%	36.2%
Spoon River	23.9%	24.6%	33.6%	27.9%	29.8%	34.0%	22.1%	36.8%	43.9%	50.7%	40.6%	41.2%
Wood	23.8%	30.8%	31.3%	38.8%	33.8%	30.9%	30.8%	34.7%	35.9%	41.9%	39.0%	43.5%

Data Source: IPEDS Data Resource Center

**Methodology:** Included are the percent of first-time full-time degree/certificate seeking students who earned an award within 150% of completion time, as reported to IPEDS.

**KPI 3e: At-Risk Allocations, Pell recipient completion**

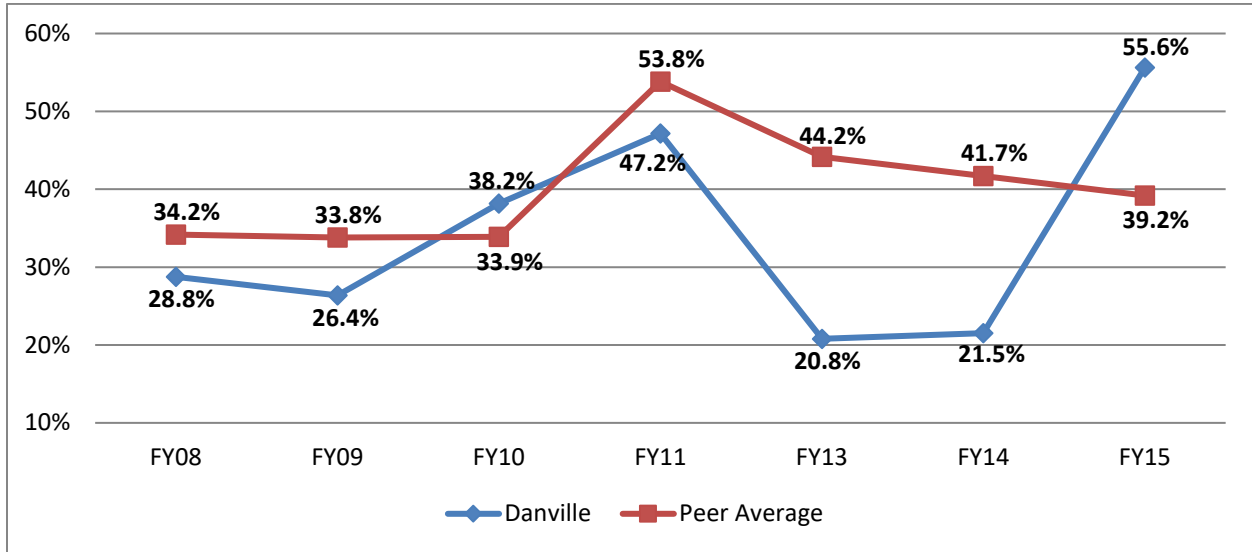


Performance Yrs	FY08 - FY09	FY10 - FY11	FY11 - FY13	FY13 - FY14	FY14 - FY15
Funding Yr	FY13	FY14	*	FY17	FY18
Danville	\$1,252	\$871	*	\$8,837	\$13,035
Peer Average	\$1,460	\$2,302	*	\$1,950	\$714
Highland	\$0	\$2,335	*	\$0	\$0
Kaskaskia	\$978	\$42	*	\$0	\$0
Kishwaukee	\$2,404	\$913	*	\$4,852	\$0
Rend Lake	\$3,910	\$5,525	*	\$0	\$0
Sandburg	\$246	\$422	*	\$1,811	\$1,665
Sauk Valley	\$2,130	\$8,516	*	\$2,014	\$0
Shawnee	\$2,679	\$457	*	\$0	\$4,170
Southeastern	\$0	\$2,040	*	\$3,074	\$1,305
Spoon River	\$2,253	\$935	*	\$5,863	\$0
Wood	\$0	\$1,830	*	\$1,886	\$0

Data Source:ICCB Performance Metrics [https://www.iccb.org/financial\\_compliance/budgets-allocations/performance-based-funding/](https://www.iccb.org/financial_compliance/budgets-allocations/performance-based-funding/) Table 1

**Methodology:** Information collected from the ICCB Performance Metric Degree & Certificate Completion of At-Risk Students looks at the increase of graduates who were Pell recipients or started in remedial coursework. Funding is based on percentage improvement between two prior fiscal years.

**KPI 3e: At-Risk, Pell recipient completion, continued**



	FY 2008		FY 2009		FY 2010		FY 2011	
Danville	151 of	525 = 28.8%	173 of	656 = 26.4%	242 of	634 = 38.2%	315 of	668 = 47.2%
Peer Average	210 of	614 = 34.2%	229 of	678 = 33.8%	206 of	608 = 33.9%	299 of	555 = 53.8%
Highland	131 of	354 = 37.0%	118 of	336 = 35.1%	113 of	357 = 31.7%	196 of	405 = 48.4%
Kaskaskia	379 of	1059 = 35.8%	392 of	1014 = 38.7%	552 of	1074 = 51.4%	581 of	984 = 59.0%
Kishwaukee	206 of	763 = 27.0%	223 of	781 = 28.6%	283 of	800 = 35.4%	353 of	744 = 47.4%
Rend Lake	249 of	992 = 25.1%	336 of	1265 = 26.6%	190 of	785 = 24.2%	491 of	895 = 54.9%
Sandburg	208 of	386 = 53.9%	212 of	392 = 54.1%	208 of	365 = 57.0%	217 of	384 = 56.5%
Sauk Valley	220 of	695 = 31.7%	256 of	884 = 29.0%	36 of	801 = 4.5%	320 of	589 = 54.3%
Shawnee	206 of	444 = 46.4%	254 of	578 = 43.9%	287 of	569 = 50.4%	258 of	420 = 61.4%
Southeastern	173 of	559 = 30.9%	158 of	537 = 29.4%	101 of	435 = 23.2%	154 of	268 = 57.5%
Spoon River	121 of	364 = 33.2%	142 of	485 = 29.3%	122 of	344 = 35.5%	151 of	276 = 54.7%
Wood	207 of	527 = 39.3%	201 of	508 = 39.6%	167 of	547 = 30.5%	266 of	584 = 45.5%

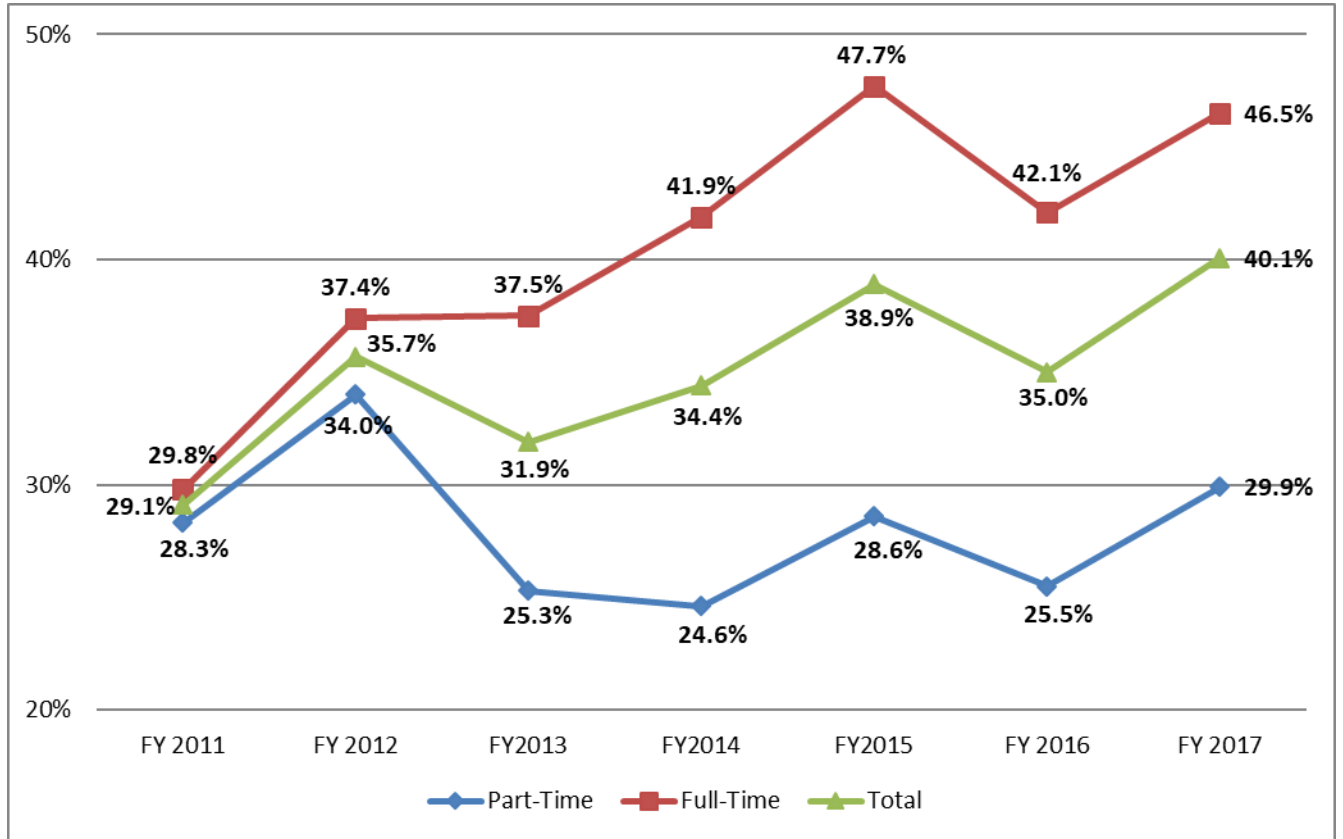
	FY 2012		FY 2013		FY 2014		FY 2015	
Danville	Data unavailable		125 of	601 = 20.8%	133 of	618 = 21.5%	311 of	559 = 55.6%
Peer Average	Data unavailable		268 of	608 = 44.2%	246 of	591 = 41.7%	233 of	594 = 39.2%
Highland	Data unavailable		184 of	358 = 51.4%	166 of	343 = 48.4%	158 of	431 = 36.7%
Kaskaskia	Data unavailable		584 of	1309 = 44.6%	573 of	1243 = 46.1%	484 of	1235 = 39.2%
Kishwaukee	Data unavailable		235 of	794 = 29.6%	297 of	820 = 36.2%	227 of	690 = 32.9%
Rend Lake	Data unavailable		521 of	926 = 56.3%	319 of	856 = 37.3%	315 of	805 = 39.1%
Sandburg	Data unavailable		252 of	437 = 57.7%	228 of	460 = 49.6%	256 of	472 = 54.2%
Sauk Valley	Data unavailable		232 of	694 = 33.4%	260 of	700 = 37.1%	241 of	688 = 35.0%
Shawnee	Data unavailable		203 of	477 = 42.6%	146 of	419 = 34.8%	192 of	478 = 40.2%
Southeastern	Data unavailable		116 of	285 = 40.7%	130 of	273 = 47.6%	141 of	335 = 42.1%
Spoon River	Data unavailable		128 of	286 = 44.8%	122 of	346 = 35.3%	108 of	315 = 34.3%
Wood	Data unavailable		228 of	510 = 44.7%	221 of	445 = 49.7%	208 of	495 = 42.0%

Data Source: ICCB Performance Metric

**Methodology:** Information collected from the ICCB Performance Metric Degree & Certificate Completion of At-Risk Students. This chart looks at percentage of graduates who receive Pell funding.



### KPI 3f: DACC 4-year Graduation Rate, Fall and Spring Cohorts

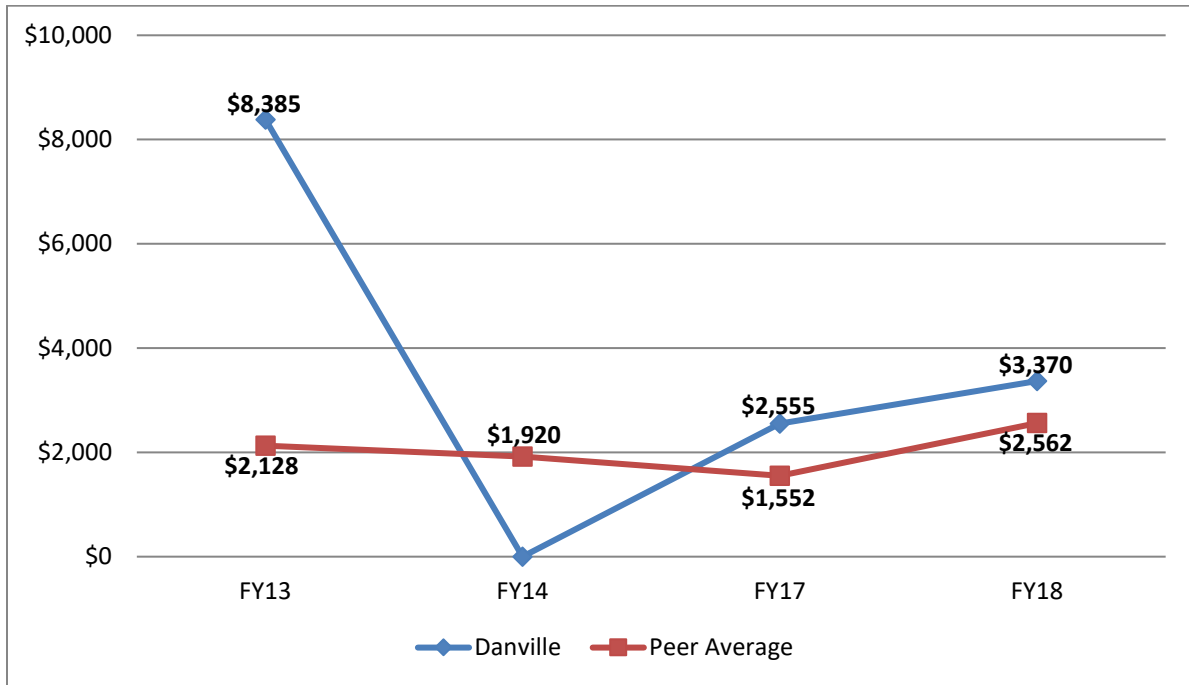


	FY 2011	FY 2012	FY 2013	FY 2014	FY 2015	FY 2016	FY 2017
Total Cohort	285 of 978 = 29.1%	336 of 941 = 35.7%	260 of 814 = 31.9%	299 of 868 = 34.4%	336 of 863 = 38.9%	241 of 688 = 35.0%	252 of 629 = 40.1%
Male	110 of 424 = 25.9%	110 of 375 = 29.3%	106 of 377 = 28.1%	112 of 381 = 29.4%	125 of 382 = 32.7%	101 of 320 = 31.6%	95 of 263 = 36.1%
Female	175 of 554 = 31.6%	226 of 566 = 39.9%	154 of 437 = 35.2%	187 of 487 = 38.4%	211 of 481 = 43.9%	140 of 368 = 38.0%	157 of 366 = 42.9%
White	227 of 694 = 32.7%	266 of 662 = 40.2%	216 of 581 = 37.2%	233 of 605 = 38.5%	259 of 603 = 43.0%	183 of 465 = 39.4%	205 of 459 = 44.7%
Black	31 of 168 = 18.5%	40 of 182 = 22.0%	24 of 150 = 16.0%	30 of 159 = 18.9%	37 of 145 = 25.5%	23 of 122 = 18.9%	20 of 92 = 21.7%
Hispanic	6 of 41 = 14.6%	14 of 39 = 35.9%	8 of 30 = 26.7%	14 of 38 = 36.8%	11 of 38 = 28.9%	4 of 26 = 15.4%	9 of 28 = 32.1%
Pell Receiving	137 of 597 = 22.9%	144 of 527 = 27.3%	122 of 443 = 27.5%	141 of 478 = 29.5%	163 of 458 = 35.6%	109 of 355 = 30.7%	100 of 311 = 32.2%
Non-Pell	148 of 381 = 38.8%	192 of 414 = 46.4%	138 of 371 = 37.2%	158 of 390 = 40.5%	173 of 405 = 42.7%	132 of 333 = 39.6%	152 of 318 = 47.8%
1st Generation	151 of 597 = 25.3%	175 of 585 = 29.9%	162 of 542 = 29.9%	184 of 565 = 32.6%	209 of 572 = 36.5%	148 of 470 = 31.5%	150 of 439 = 34.2%
Non-1st Gen	134 of 381 = 35.2%	161 of 356 = 45.2%	98 of 272 = 36.0%	115 of 303 = 38.0%	127 of 291 = 43.6%	93 of 218 = 42.7%	102 of 190 = 53.7%
Part-time	127 of 448 = 28.3%	158 of 465 = 34.0%	94 of 371 = 25.3%	92 of 374 = 24.6%	114 of 398 = 28.6%	75 of 294 = 25.5%	73 of 244 = 29.9%
Full-time	158 of 530 = 29.8%	178 of 476 = 37.4%	166 of 443 = 37.5%	207 of 494 = 41.9%	222 of 465 = 47.7%	166 of 394 = 42.1%	179 of 385 = 46.5%

Data Source: Institutional Effectiveness Office

**Methodology:** Included are new cohort students enrolled in a degree or certificate program, excluding inmates, who earned an award within four years.

### KPI 4a: Transfer to 4 year, Allocations

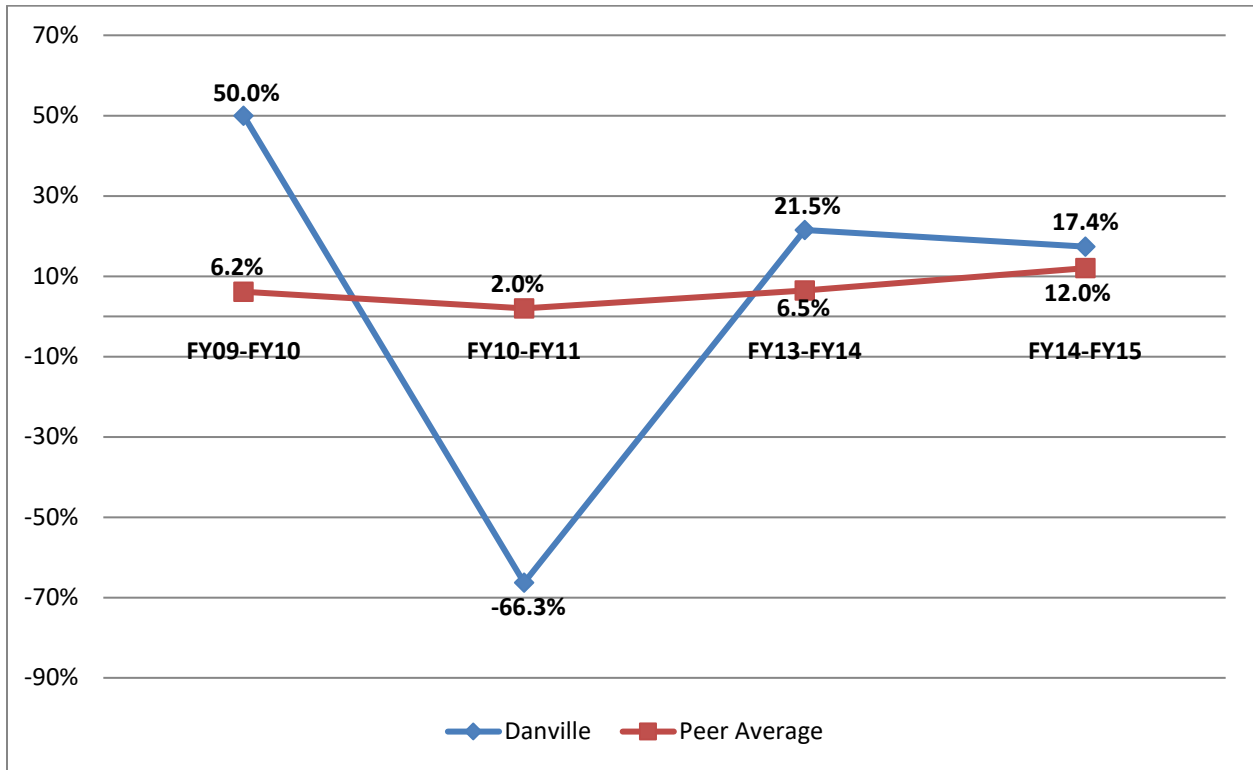


Performance Yrs	FY09 - FY10	FY10 - FY11	FY11 - FY13	FY13 - FY14	FY14 - FY15
Funding Yr	FY13	FY14	*	FY17	FY18
Danville	\$8,385	\$0	*	\$2,555	\$3,370
Peer Average	\$2,128	\$1,920	*	\$1,552	\$2,562
Highland	\$2,236	\$0	*	\$3,115	\$0
Kaskaskia	\$2,427	\$2,961	*	\$6,820	\$670
Kishwaukee	\$246	\$344	*	\$2,555	\$3,390
Rend Lake	\$56	\$0	*	\$105	\$765
Sandburg	\$7,230	\$0	*	\$2,785	\$4,070
Sauk Valley	\$0	\$2,402	*	\$60	\$0
Shawnee	\$0	\$0	*	\$0	\$3,910
Southeastern	\$0	\$9,091	*	\$0	\$5,530
Spoon River	\$9,084	\$2,730	*	\$0	\$5,880
Wood	\$0	\$1,674	*	\$75	\$1,400

Data Source:ICCB Performance Metrics [https://www.iccb.org/financial\\_compliance/budgets-allocations/performance-based-funding/](https://www.iccb.org/financial_compliance/budgets-allocations/performance-based-funding/) Table 3

**Methodology:** Information collected from the ICCB Performance Metric Transfer to a 4-year Institution measures the increase in the number of transfers to any 4-year US college (NSC). Funding is based on percentage improvement between two prior fiscal years.

**KPI 4a: Transfer to 4 year, Percent Change**

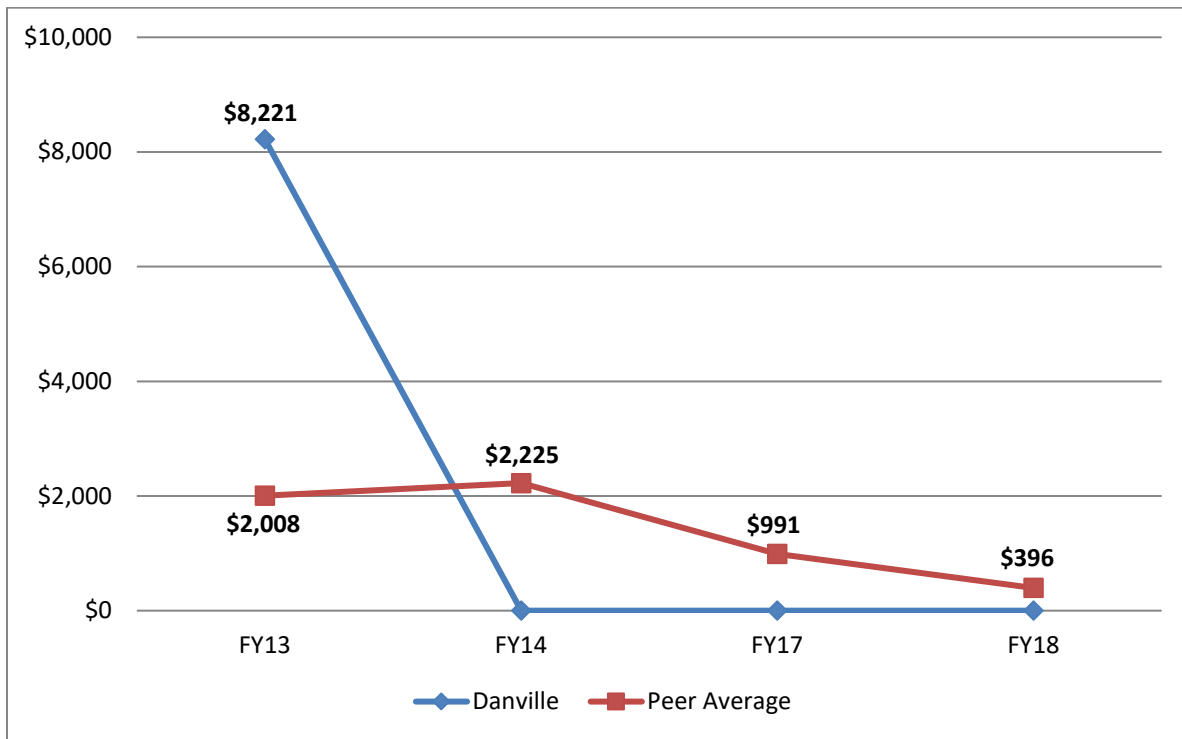


	FY09-FY10	FY10-FY11	FY11-FY13	FY13-FY14	FY14-FY15
Danville	50.0%	-66.3%	*	21.5%	17.4%
Peer Average	6.2%	2.0%	*	6.5%	12.0%
Highland	13.3%	-31.4%	*	26.2%	-10.7%
Kaskaskia	14.5%	19.5%	*	57.4%	3.5%
Kishwaukee	1.5%	2.3%	*	21.5%	17.5%
Rend Lake	0.3%	-1.7%	*	0.9%	3.9%
Sandburg	43.1%	-73.6%	*	23.4%	21.0%
Sauk Valley	-10.4%	15.9%	*	0.5%	-1.5%
Shawnee	-16.4%	0.0%	*	-11.7%	20.2%
Southeastern	-34.4%	60.0%	*	-16.2%	28.6%
Spoon River	54.2%	18.0%	*	-37.7%	30.4%
Wood	-4.2%	11.0%	*	0.6%	7.2%

Data Source: ICCB Performance Metric

**Methodology:** Information collected from the ICCB Performance Metric Transfer to a 4-year Institution measures the increase in the number of transfers to any 4-year US college (NSC).

### KPI 4b: Transfer to a Community College, Allocations

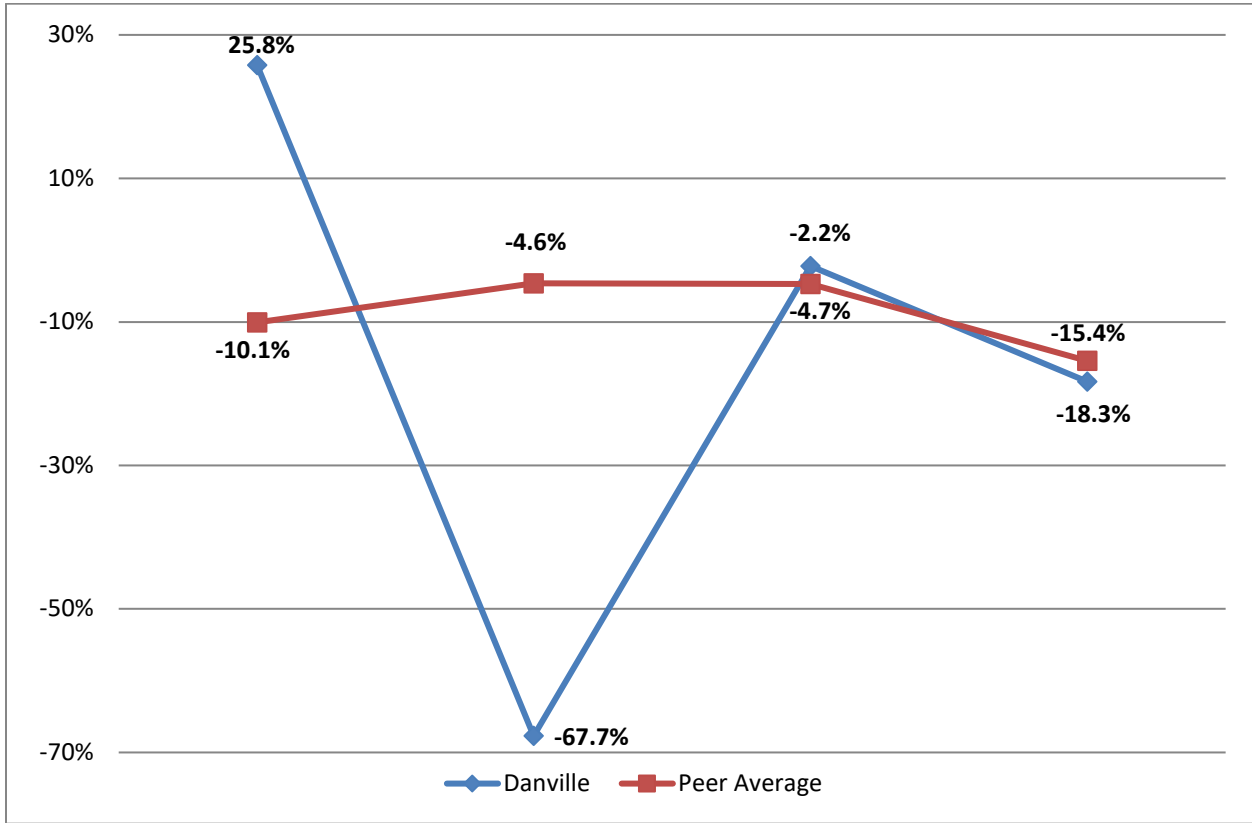


Performance Yrs	FY09 - FY10	FY10 - FY11	FY11 - FY13	FY13 - FY14	FY14 - FY15
Funding Yr	FY13	FY14	*	FY17	FY18
Danville	\$8,221	\$0	*	\$0	\$0
Peer Average	\$2,008	\$2,225	*	\$991	\$396
Highland	\$2,416	\$0	*	\$2,040	\$840
Kaskaskia	\$0	\$0	*	\$4,865	\$0
Kishwaukee	\$0	\$2,656	*	\$135	\$2,850
Rend Lake	\$0	\$0	*	\$0	\$0
Sandburg	\$17,664	\$0	*	\$565	\$265
Sauk Valley	\$0	\$5,946	*	\$560	\$0
Shawnee	\$0	\$4,149	*	\$0	\$0
Southeastern	\$0	\$4,552	*	\$0	\$0
Spoon River	\$0	\$2,890	*	\$1,745	\$0
Wood	\$0	\$2,061	*	\$0	\$0

Data Source: ICCB Performance Metrics [https://www.iccb.org/financial\\_compliance/budgets-allocations/performance-based-funding/](https://www.iccb.org/financial_compliance/budgets-allocations/performance-based-funding/) Table 4

**Methodology:** Information collected from the ICCB Performance Metric Transfer to a 2-year Institution measures the increase in the number of transfers to any 2-year US college (NSC). Funding is based on percentage improvement between two prior fiscal years.

**KPI 4b: Transfer to a Community College, Percent Change**



	FY09-FY10	FY10-FY11	FY11-FY13	FY13-FY14	FY14-FY15
Danville	25.8%	-67.7%	*	-2.2%	-18.3%
Peer Average	-10.1%	-4.6%	*	-4.7%	-15.4%
Highland	7.6%	-29.6%	*	17.1%	-6.4%
Kaskaskia	-15.5%	-32.8%	*	40.7%	-12.9%
Kishwaukee	-21.7%	14.6%	*	1.1%	-2.3%
Rend Lake	-11.8%	-5.1%	*	-4.4%	-15.6%
Sandburg	55.4%	-76.0%	*	-9.5%	-10.4%
Sauk Valley	-35.5%	32.7%	*	4.7%	-39.3%
Shawnee	-13.5%	-2.2%	*	-32.7%	-9.0%
Southeastern	-15.4%	25.0%	*	-39.7%	-18.5%
Spoon River	-34.4%	15.9%	*	-9.9%	-33.4%
Wood	-15.9%	11.3%	*	-14.5%	-6.5%

Data Source: ICCB Performance Metric

**Methodology:** Information collected from the ICCB Performance Metric Transfer to a 2-year Institution measures the increase in the number of transfers to any 2-year US college (NSC).